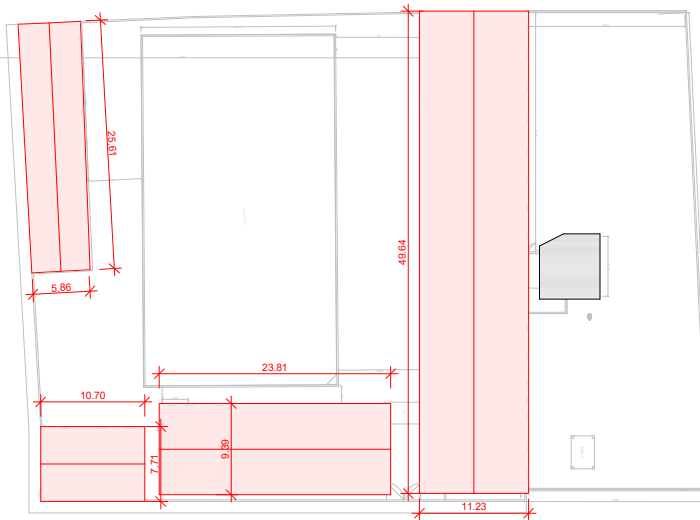


1 **TÉRREO**
ESCALA 1 : 500




2 **COBERTURA**
ESCALA 1 : 500

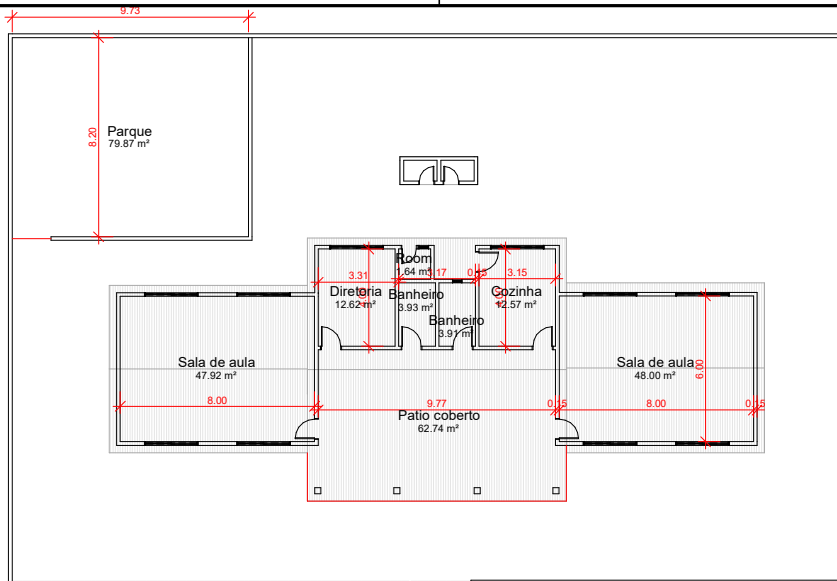


IMAGEM GOOGLE MAPS

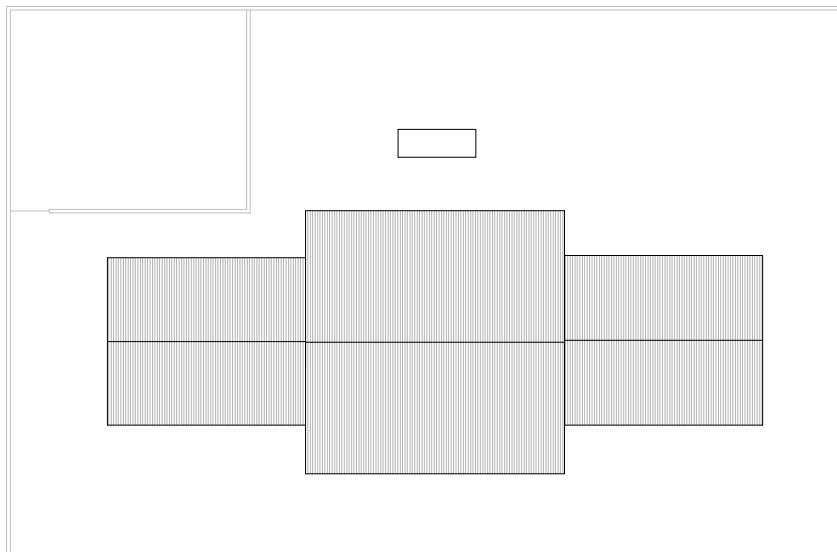
LEGENDA

- EXISTENTE
- A DEMOLIR
- A CONSTRUIR

 <p>PREFEITURA MUNICIPAL DE CANARANA <i>Compromisso com o Trabalho</i></p>	<p>ESCOLA CATÃO DOURADO</p> <p>PLANTAS</p>		<p>DATA:</p> <p>13/03/2023</p>	<p>ESCALA:</p> <p>1:200</p>	<p>FOLHA:</p> <p>F01</p>
	<p>LOCAL:</p> <p>PAZ DE SALOBRO- CANARANA- BA</p>	<p>RESPONSÁVEL TÉCNICO:</p> <p>Valdemar Andrade</p>	<p>DESENHO:</p>	<p>01/01</p>	



1 **TÉRREO**
ESCALA 1 : 200




2 **COBERTURA**
ESCALA 1 : 200

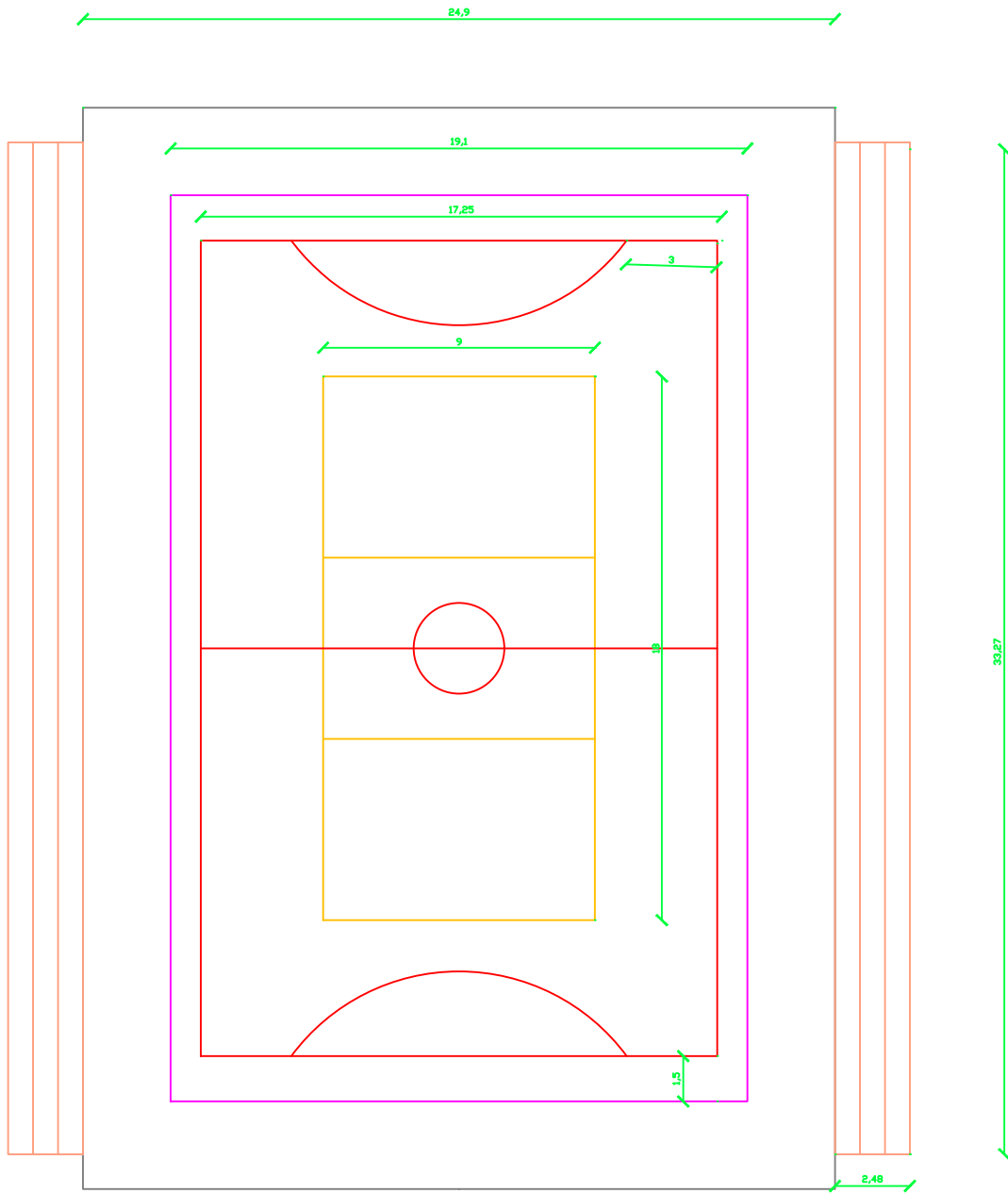


IMAGEM GOOGLE MAPS

LEGENDA

- EXISTENTE
- A DEMOLIR
- A CONSTRUIR

 <p>PREFEITURA MUNICIPAL DE CANARANA <i>Compromisso com o Trabalho</i></p>	<p>CRECHE JANDIRA</p> <p>PLANTAS</p>	<p>DATA:</p> <p>13/03/2023</p>	<p>ESCALA:</p> <p>1:200</p>	<p>FOLHA:</p> <p>F01</p>
	<p>LOCAL:</p> <p>PAZ DE SALOBRO- CANARANA- BA</p>	<p>RESPONSÁVEL TÉCNICO:</p> <p>Valdemar Andrade</p>	<p>DESENHO:</p>	<p>01/01</p>

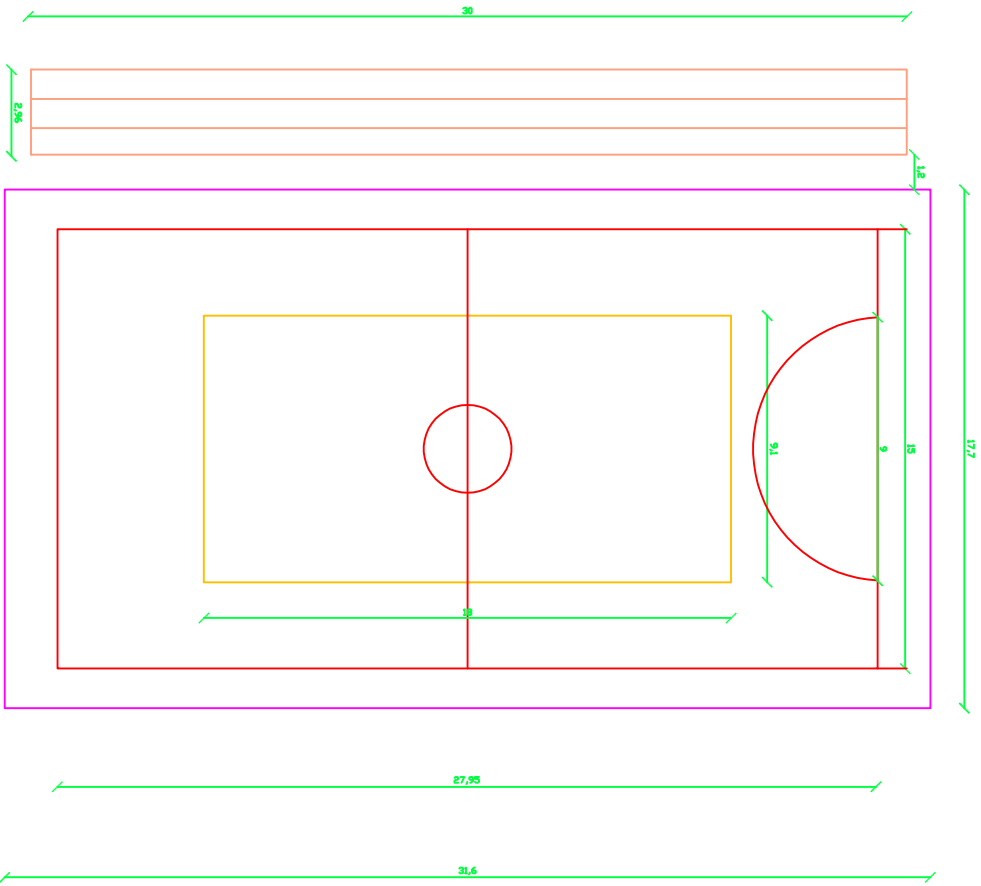


Prefeitura de Canarana

RESP. TÉCNICO:
Valdemar AndradeE

PROPRIETÁRIO:

LOCAL: EscolaFaustiniano



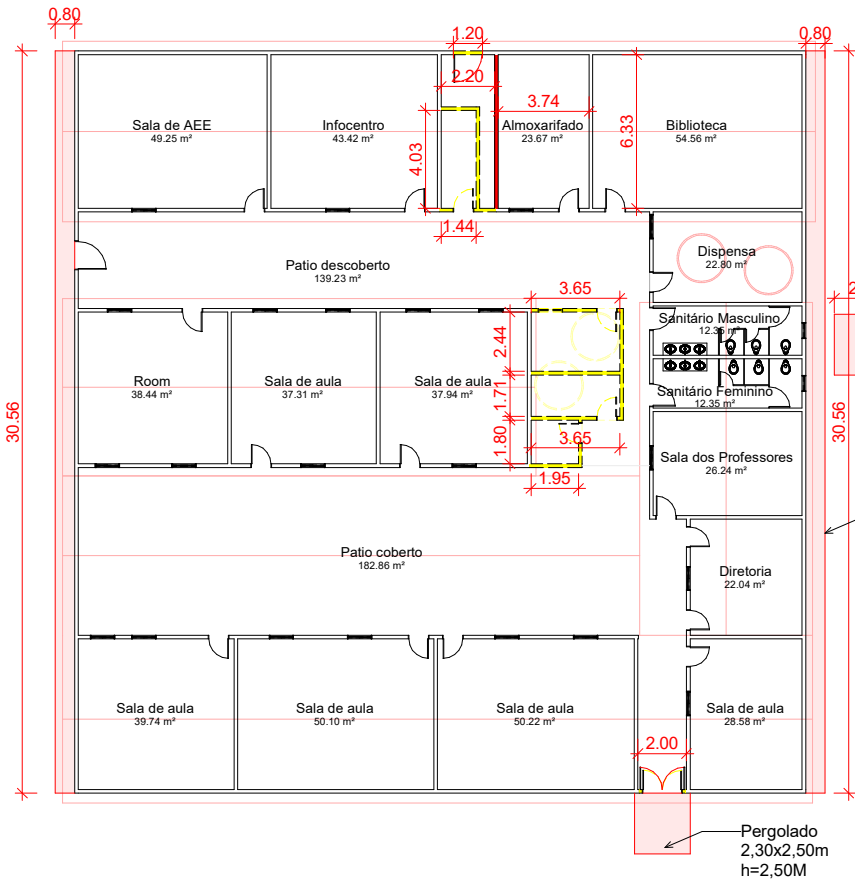
Prefeitura de Canarana

RESP. TÉCNICO

Valdemar Andrade

PROJETADO

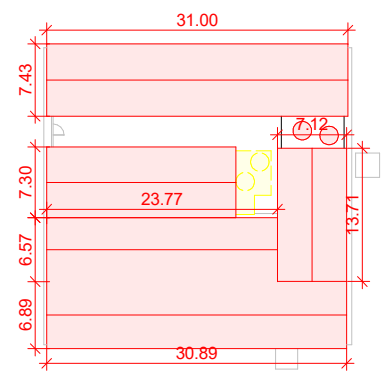
LOCAL: Lagoa Do Zeca



2 **TÉRREO**
ESCALA 1 : 200




IMAGEM GOOGLE MAPS

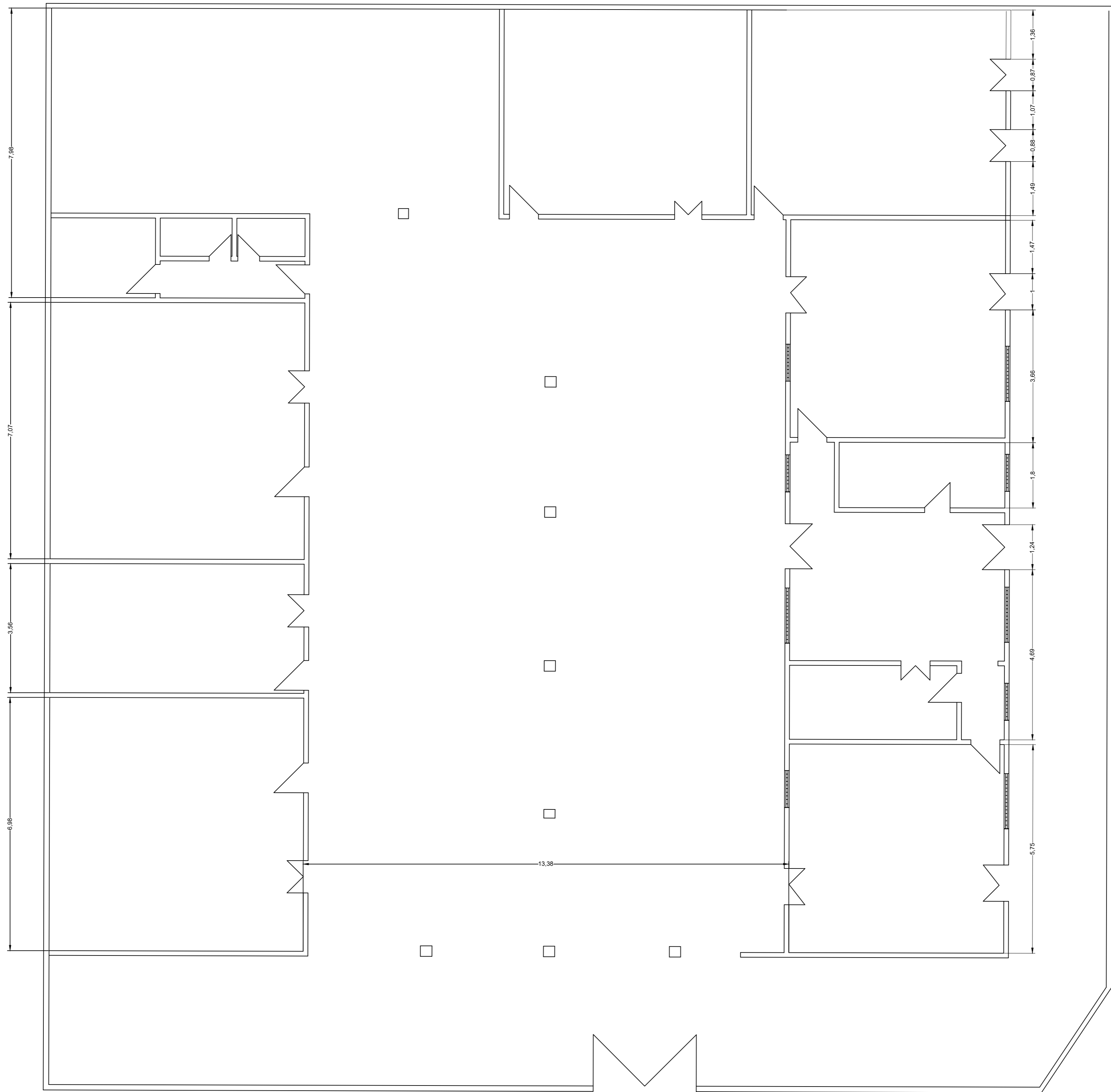


1 **COBERTURA**
ESCALA 1 : 500

LEGENDA

- EXISTENTE
- A DEMOLIR
- A CONSTRUIR

 <p>PREFEITURA MUNICIPAL DE CANARANA <i>Compromisso com o Trabalho</i></p>	<p>ESCOLA OTÁVIO MANGABEIRA</p> <p>PLANTAS</p>		<p>DATA:</p> <p>13/03/2023</p>	<p>ESCALA:</p>	<p>FOLHA:</p> <p>F01</p>
	<p>LOCAL:</p> <p>POVOADO LAGOA VELHA - CANARANA-BA</p>	<p>RESPONSÁVEL TÉCNICO:</p> <p>Valdemar Andrade</p>	<p>DESENHO:</p>	<p>01/01</p>	



CLIENTE	PREFEITURA MUNICIPAL DE CANARANA	MUNICÍPIO	CANARANA
ORGÃO		BARRIO	POVOADO DA CAPIVARA
TIPO DE SERVIÇO	PROJETO DE REFORMA	TIPO DE CONDIÇÃO	ARQUITETURA
TÍTULO DE PLANTA	PLANTA BAIXA		FOLHA
	PROJETO RESPONSÁVEL	01/01	
	VALDEMAR ANDRADE	DATA	REVISÃO
			0
	DESCRIÇÃO	REVISÃO	

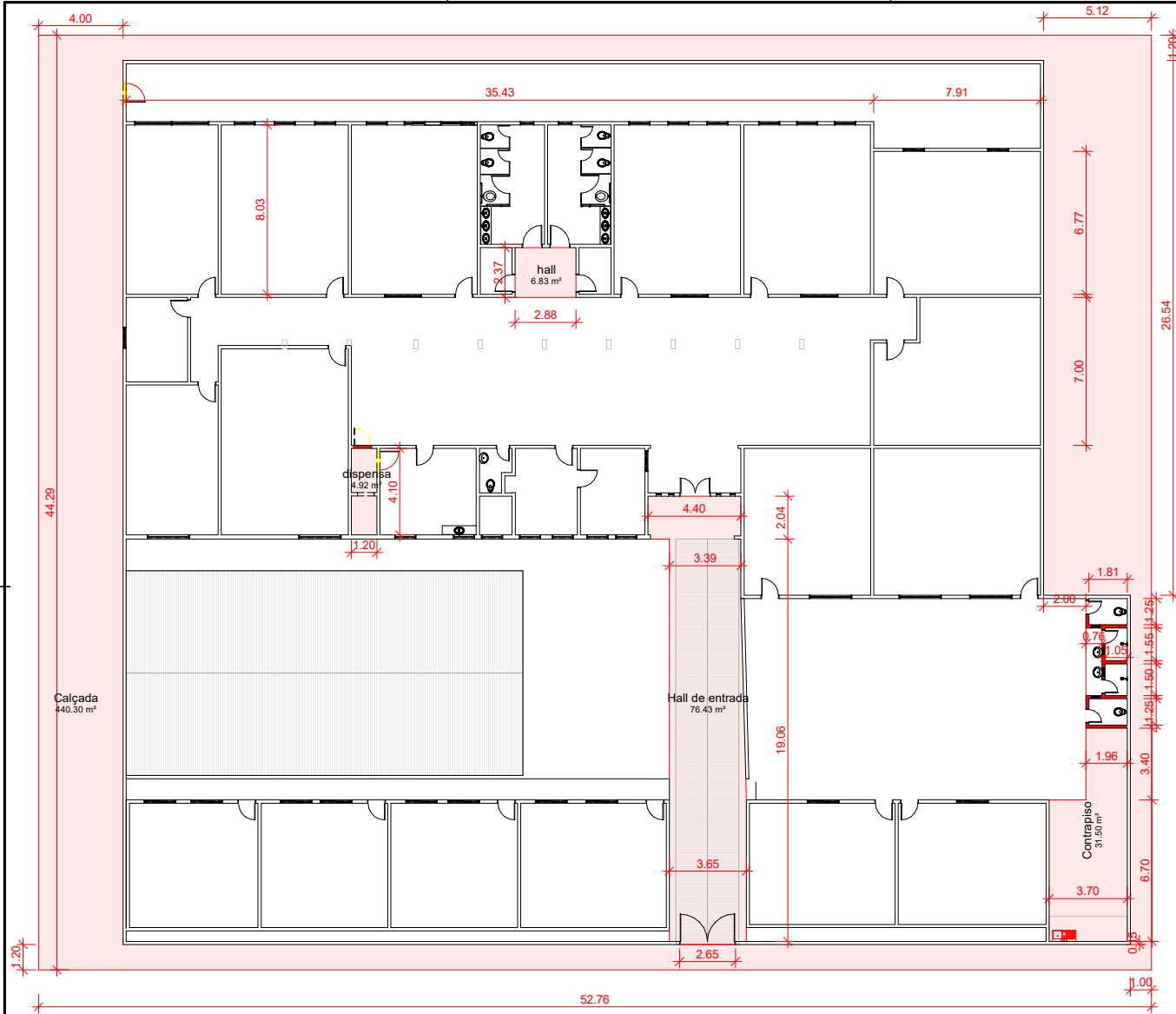
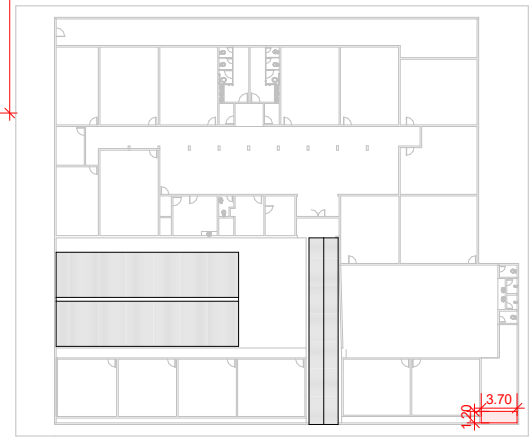


IMAGEM GOOGLE MAPS




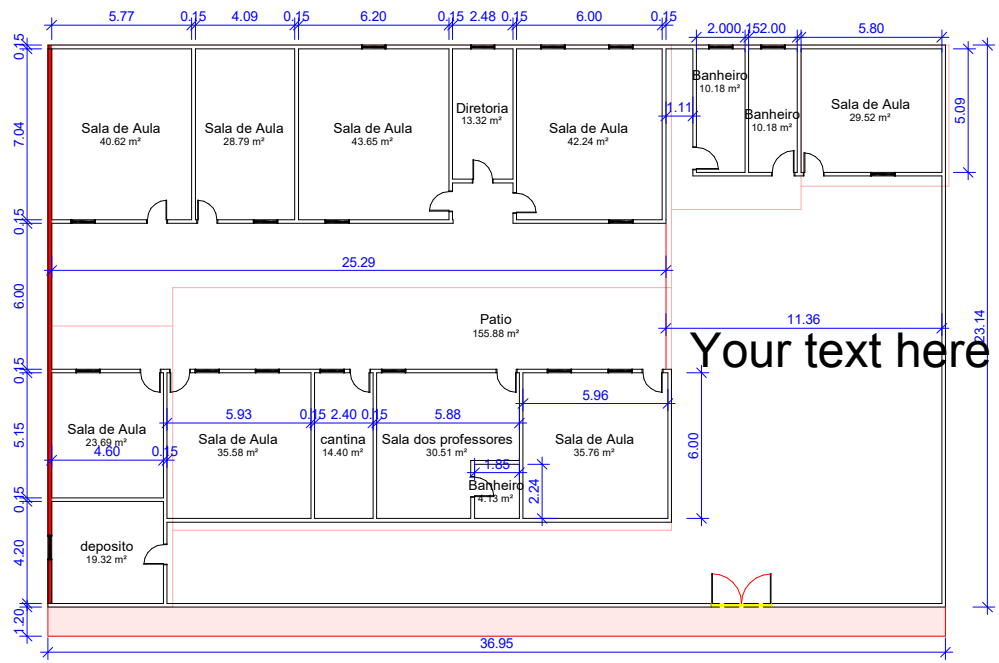
2 COBERTURA
ESCALA 1 : 500

1 TÉRREO
ESCALA 1 : 200

LEGENDA

- EXISTENTE
- A DEMOLIR
- A CONSTRUIR

 PREFEITURA MUNICIPAL DE CANARANA <i>Compromisso com o Trabalho</i>	ESCOLA FELIX DE SÁ		DATA:	ESCALA:	FOLHA:
	PLANTAS		13/03/2023		F01
LOCAL: PAZ DE SALOBRO: CANARANA- BA	RESPONSÁVEL TÉCNICO: Valdemar Andrade	DESENHO:			
					01/01



Your text here 1

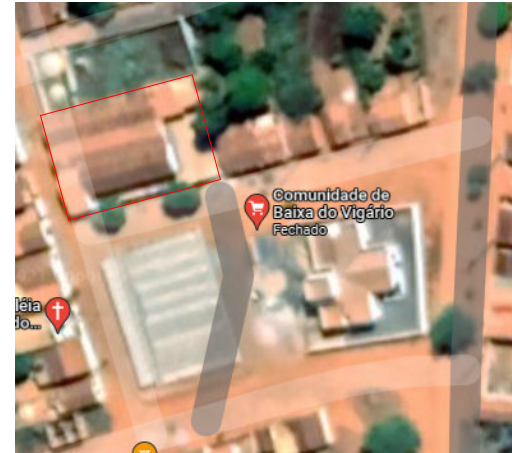
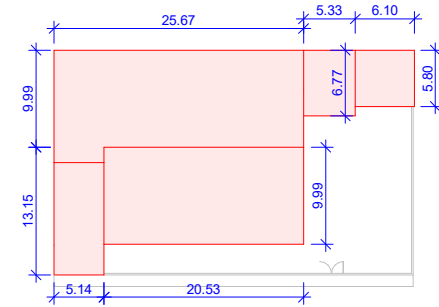



IMAGEM GOOGLE MAPS



2 COBERTURA
ESCALA 1 : 500

LEGENDA

- EXISTENTE
- A DEMOLIR
- A CONSTRUIR

 PREFEITURA MUNICIPAL DE CANARANA <i>Compromisso com o Trabalho</i>	ESCOLA JOSÉ FRANCISCO NUNES PLANTA BAIXA	DATA: 13/03/2023	ESCALA: 	FOLHA: F01
	LOCAL: POV. BAIXA DO VIGÁRIO CANARANA- BA	RESPONSÁVEL TÉCNICO: Valdemar Andrade/GREA	DESENHO: 	

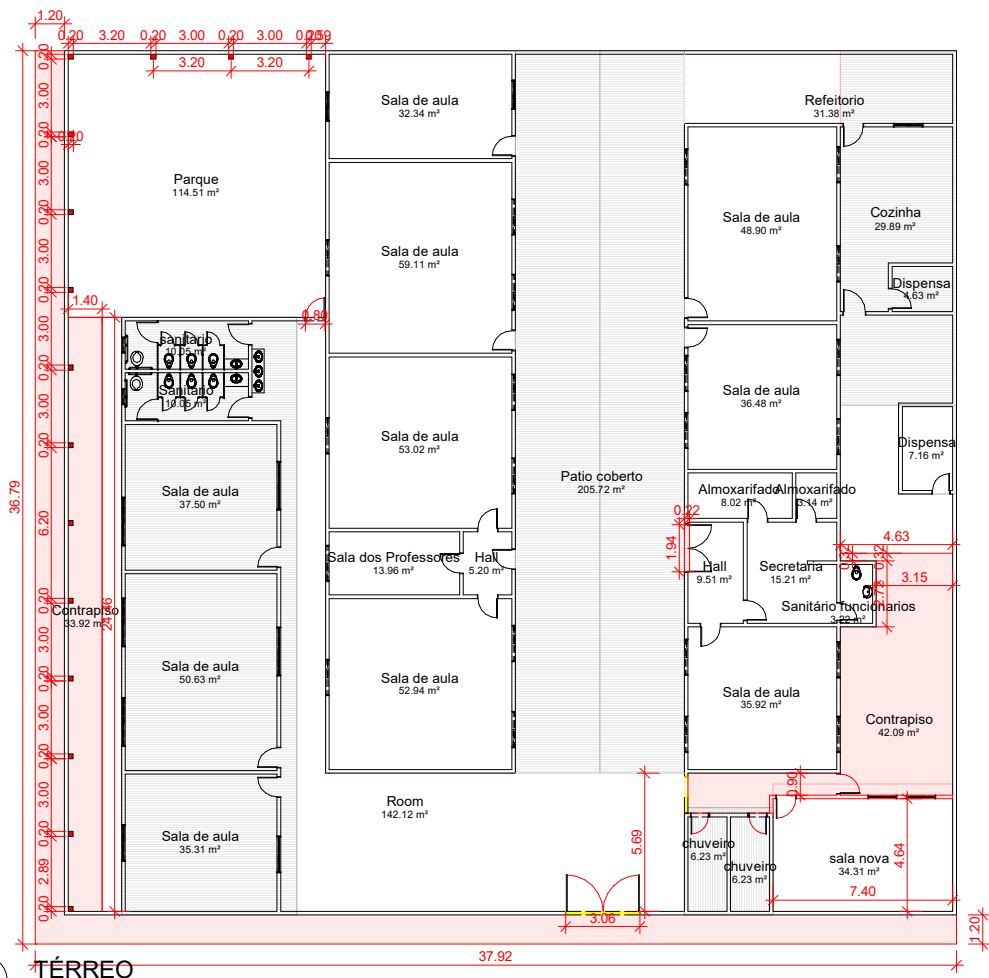
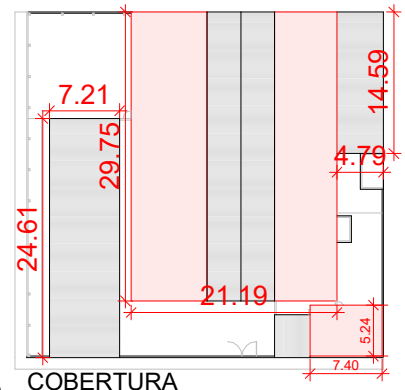

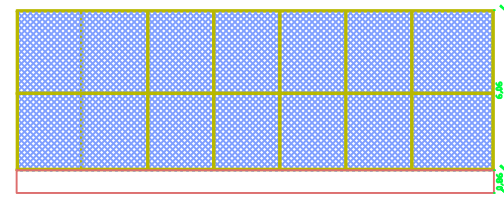
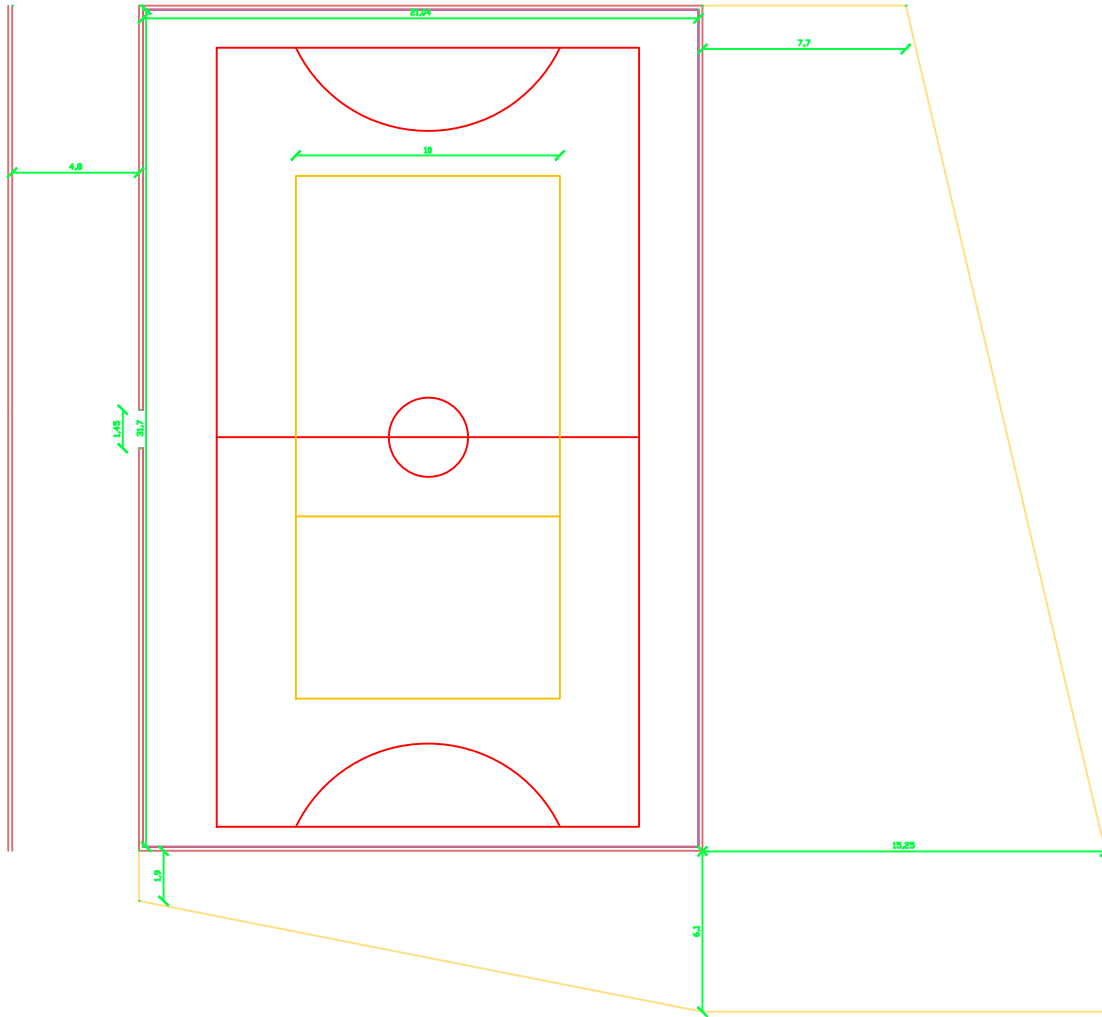


IMAGEM GOOGLE MAPS



- LEGENDA**
- EXISTENTE
 - A DEMOLIR
 - A CONSTRUIR

 PREFEITURA MUNICIPAL DE CANARANA <i>Compromisso com o Trabalho</i>	ESCOLA GUILHERME PEREIRA DE NOVAES PLANTAS		DATA: 13/03/2023	ESCALA:	FOLHA:
	LOCAL: CANARANA- BA	RESPONSÁVEL TÉCNICO: Valdemar Andrade	DESENHO:	F01	
			01/01		

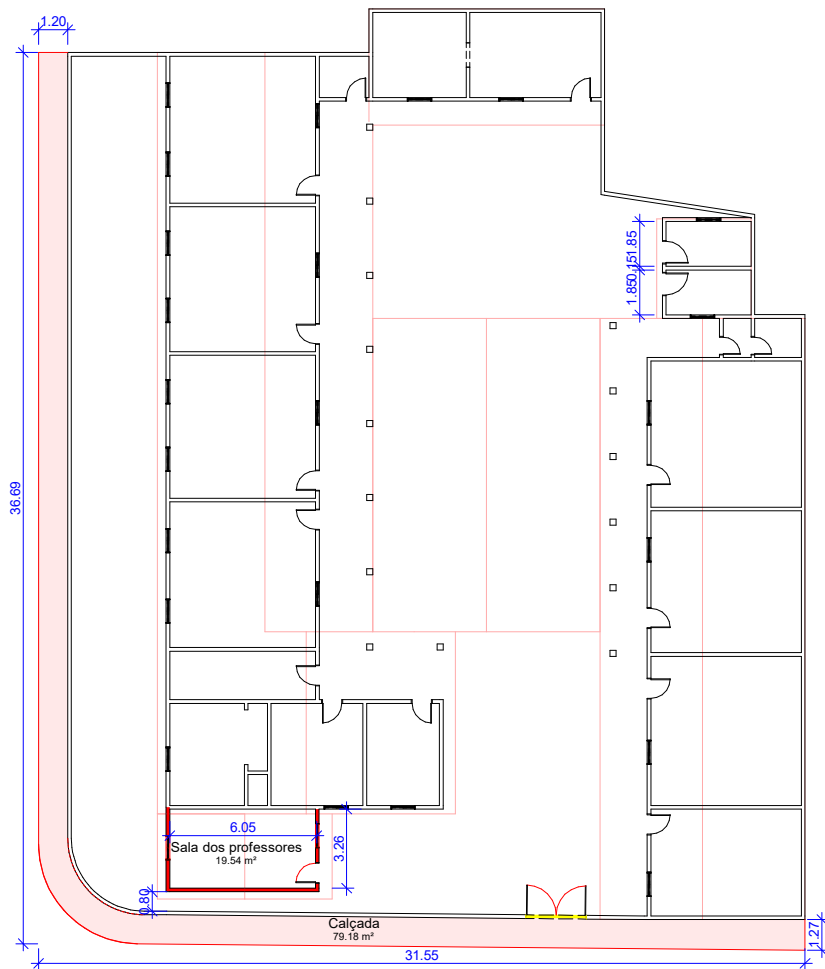


Prefeitura de Canarana

RESP. TÉCNICO
VALDEMAR ANDRADE

PROPRIETÁRIO

LOCAL: MATO VERDE



1 **TÉRREO**
ESCALA 1 : 200

LEGENDA

- EXISTENTE
- A DEMOLIR
- A CONSTRUIR

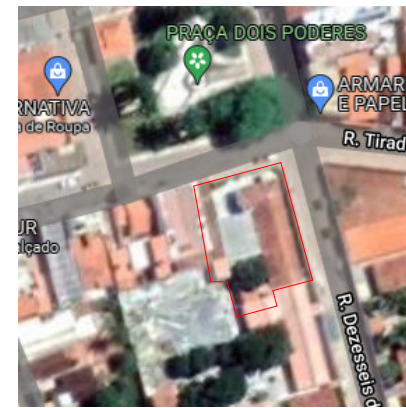
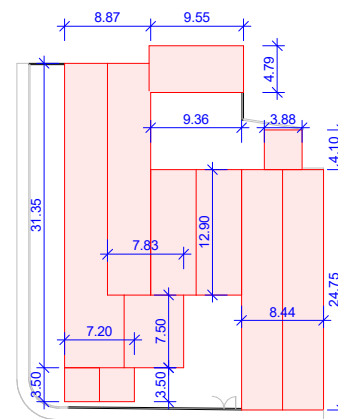



IMAGEM GOOGLE MAPS



2 **COBERTURA**
ESCALA 1 : 500

 <p>PREFEITURA MUNICIPAL DE CANARANA <i>Compromisso com o Trabalho</i></p>	<p>ESCOLA JOSÉ MARTINS</p> <p>PLANTAS</p>		<p>DATA:</p> <p>13/03/2023</p>	<p>ESCALA:</p>	<p>FOLHA:</p> <p>F01</p>
	<p>LOCAL:</p> <p>CANARANA - BA</p>	<p>RESPONSÁVEL TÉCNICO:</p> <p>Valdemar Andrade</p>	<p>DESENHO:</p>	<p>01/01</p>	

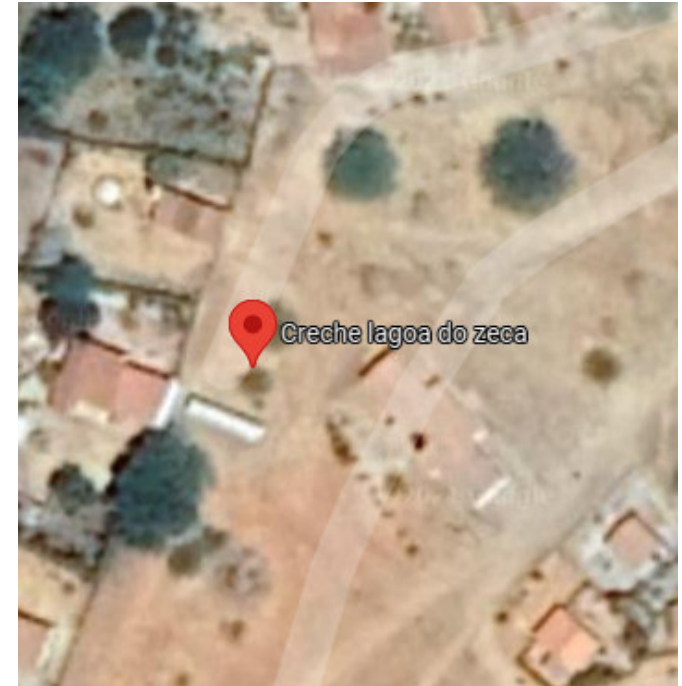
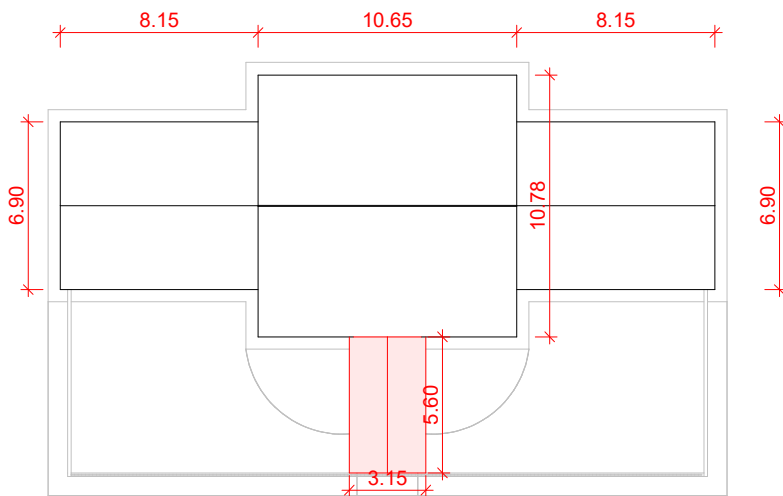
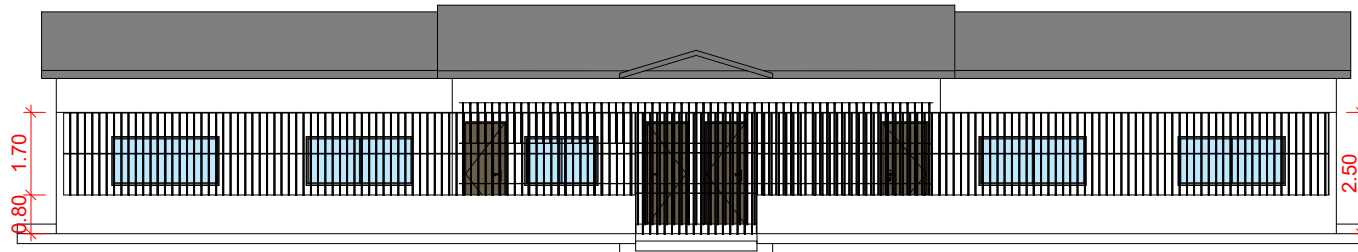


IMAGEM GOOGLE MAPS


1 COBERTURA
ESCALA 1:200

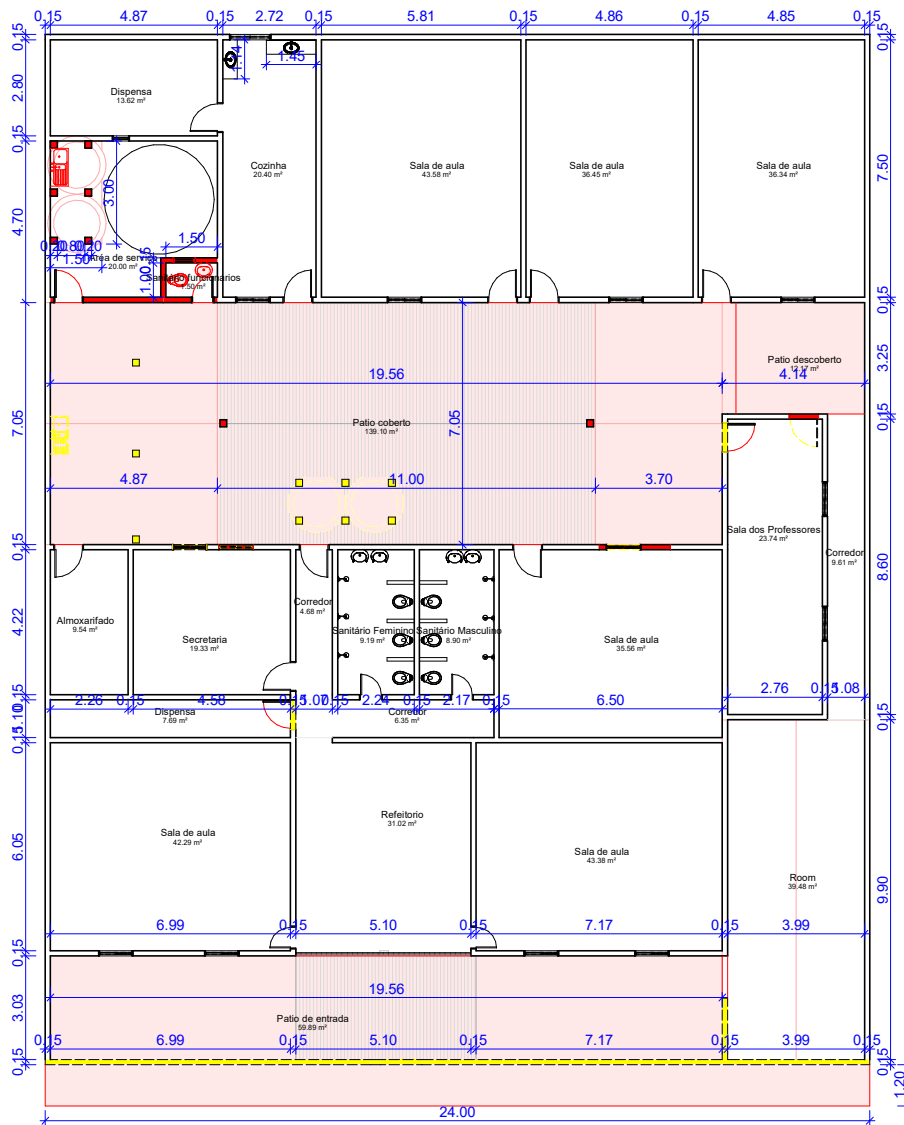


2 FACHADA FRONTAL
ESCALA 1:100

LEGENDA

- EXISTENTE
- A DEMOLIR
- A CONSTRUIR

 PREFEITURA MUNICIPAL DE CANARANA <i>Compromisso com o Trabalho</i>	ESCOLA JOSÉ BRITO DOS ANJOS- CRECHE MÃE MARCELINA PLANTAS	DATA: 13/03/2023	ESCALA:	FOLHA: F02 02/02
	LOCAL: LAGOA DE ZECA- CANARANA-BA	RESPONSÁVEL TÉCNICO: Valdemar Andrade	DESENHO:	



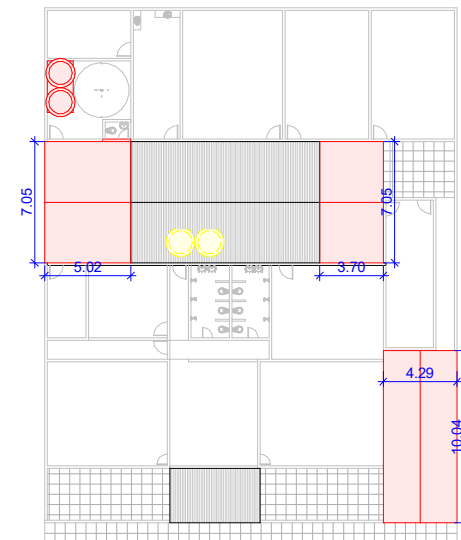
1 **TÉRREO**
ESCALA 1:100

LEGENDA

- EXISTENTE
- A DEMOLIR
- A CONSTRUIR



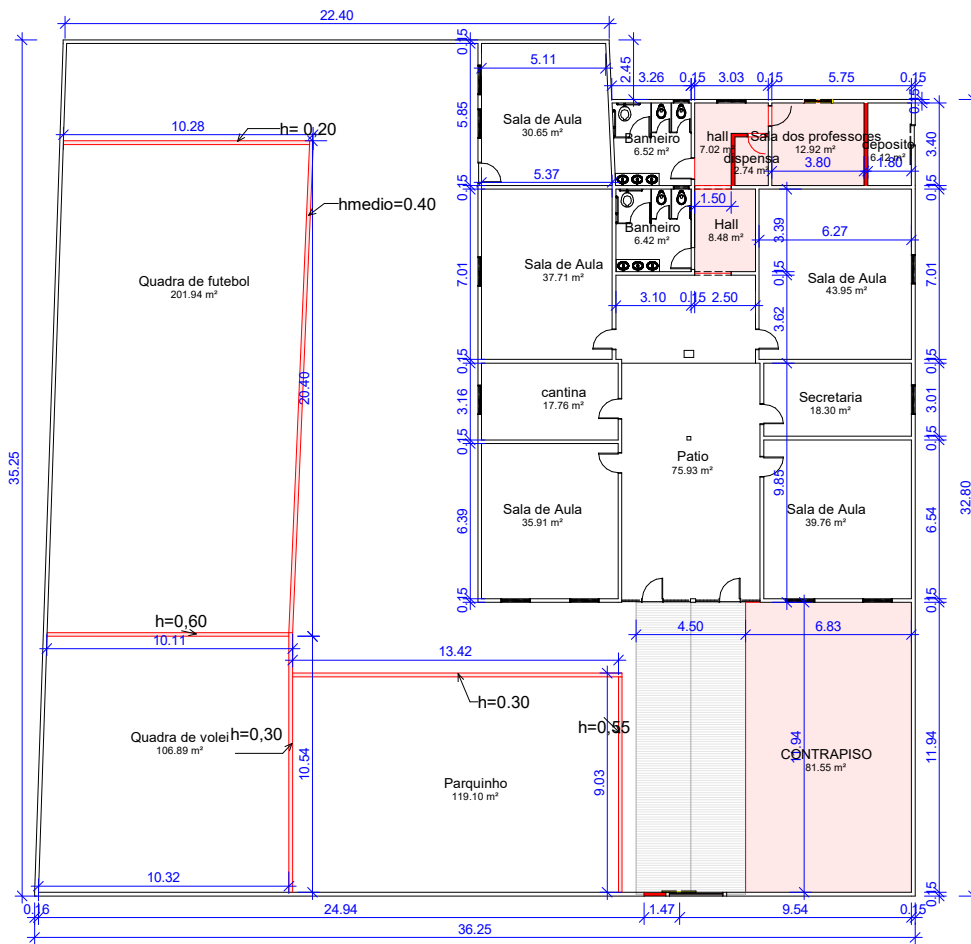
IMAGEM GOOGLE MAPS



2 **COBERTURA**
ESCALA 1:200



CRECHE CASULO MÃE TUNICA		DATA:	ESCALA:	FOLHA:
PLANTAS		10/03/2023		F01
LOCAL:	RESPONSÁVEL TÉCNICO:	DESENHO:		
POV. URBANIZADA: CANARANA-BA	Valdemar Andrade			01/01



1 **TÉRREO**
ESCALA 1 : 200



IMAGEM GOOGLE MAPS



2 **COBERTURA**
ESCALA 1 : 500

LEGENDA

- EXISTENTE
- A DEMOLIR
- A CONSTRUIR



ESCOLA OLÍMPIO JOSÉ PEREIRA
PLANTA BAIXA

DATA:
13/03/2023

ESCALA:

FOLHA:

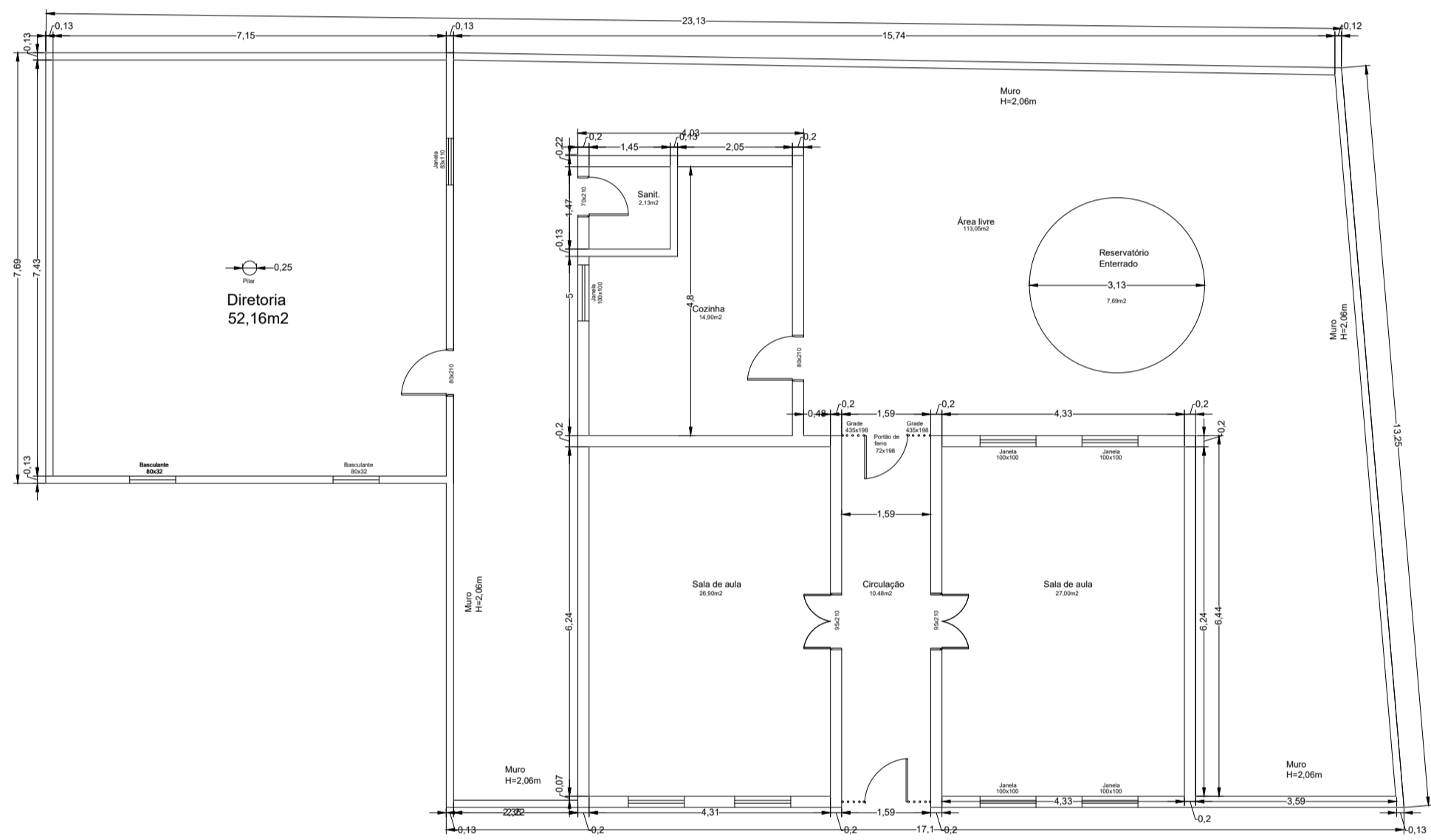
LOCAL:
POV. QUEIMADA
DO JOÃO MARTINS
CANARANA- BA

RESPONSÁVEL TÉCNICO:
Valdemar Andrade

DESENHO:

F01

01/01



CLIENTE		MUNICÍPIO/ESTADO	
PREFEITURA MUNICIPAL DE CANARANA		CANARANA	
ORÇÃO		SITIO	
		POVOADO PLANALTO	
TIPO DO SERVIÇO	TIPO DA CONDIÇÃO	TIPO DO PROJETO	
PROJETO P/ REFORMA		ARQUITETURA	
TIPO DE PLANTA			FOLHA
PLANTA BAIXA			01/01
INGENHEIRO RESPONSÁVEL		REVISÃO	
VALDEMAR ANDRADE		0	
ESCALA	DATA		
1/50			
EMPRESA	DESENHISTA		

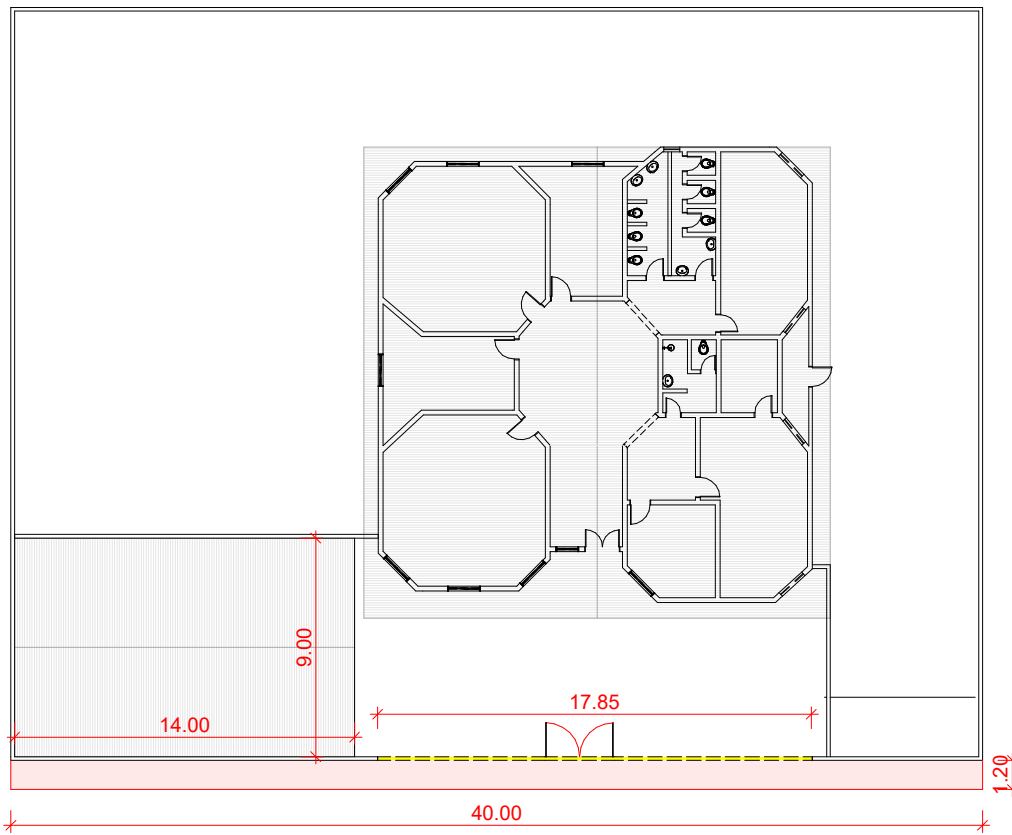
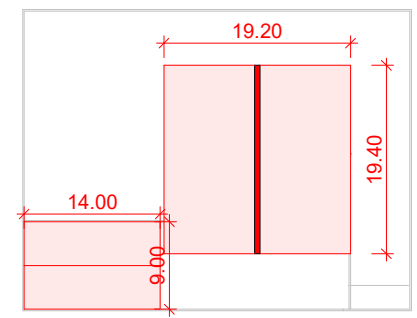


IMAGEM GOOGLE MAPS


1 **TÉRREO**
ESCALA 1 : 200

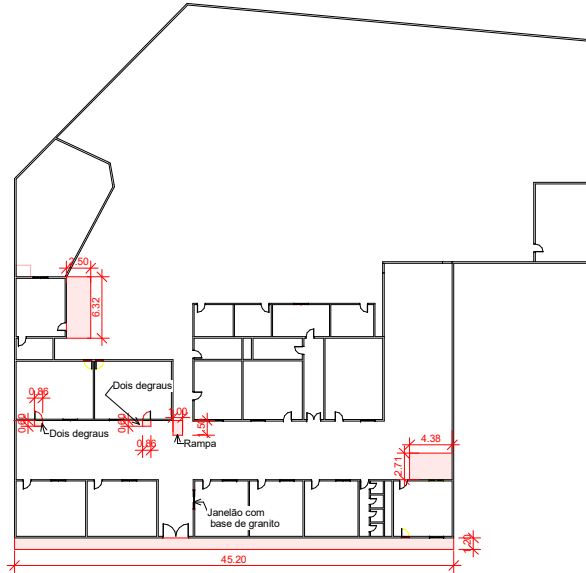


2 **COBERTURA**
ESCALA 1 : 500

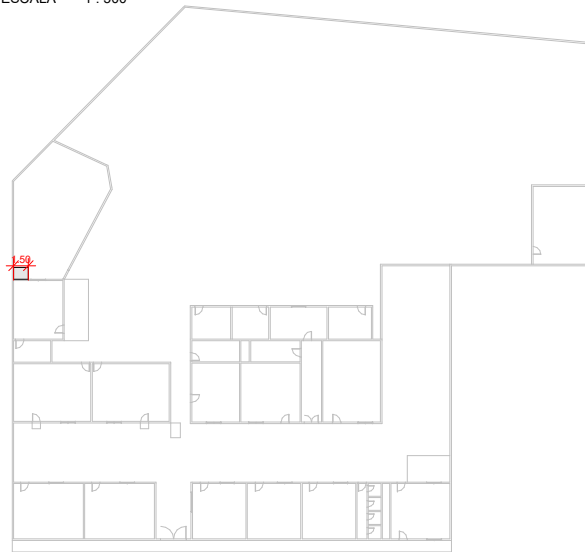
LEGENDA

- EXISTENTE
- A DEMOLIR
- A CONSTRUIR

 PREFEITURA MUNICIPAL DE CANARANA <i>Compromisso com o Trabalho</i>	CRECHE CASULO SOSSEGO DA MAMÃE PLANTAS	DATA: 13/03/2023	ESCALA:	FOLHA:
	LOCAL: PAZ DE SALOBRO-CANARANA-BA	RESPONSÁVEL TÉCNICO: Valdemar Andrade	DESENHO:	F01 01/01



1 **TÉRREO**
ESCALA 1 : 500



2 **COBERTURA**
ESCALA 1 : 500

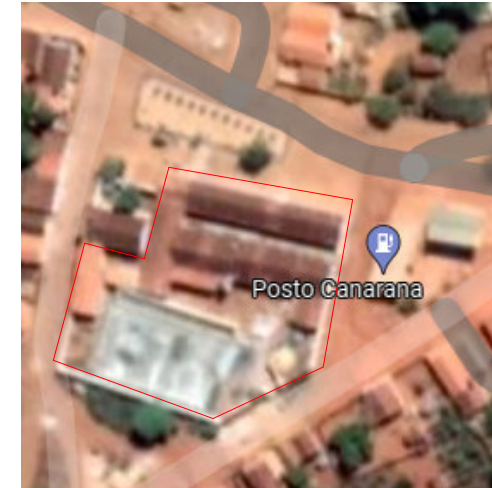



IMAGEM GOOGLE MAPS

LEGENDA

- EXISTENTE
- A DEMOLIR
- A CONSTRUIR

 PREFEITURA MUNICIPAL DE CANARANA <i>Compromisso com o Trabalho</i>	ESCOLA MIGUEL JOSÉ ALVES PLANTAS	DATA: 13/03/2023	ESCALA: 1:500	FOLHA: F01
	LOCAL: UMBURANA DO QUERE- CANARANA- BA	RESPONSÁVEL TÉCNICO: Valdemar Andrade	DESENHO:	01/01