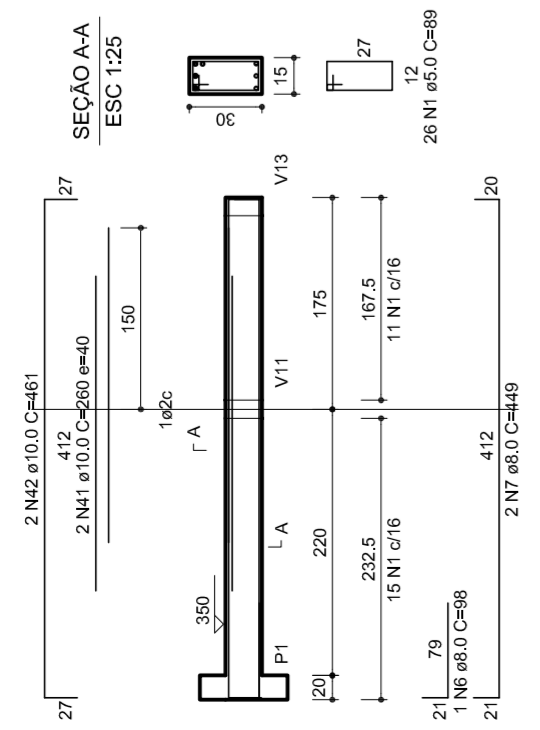
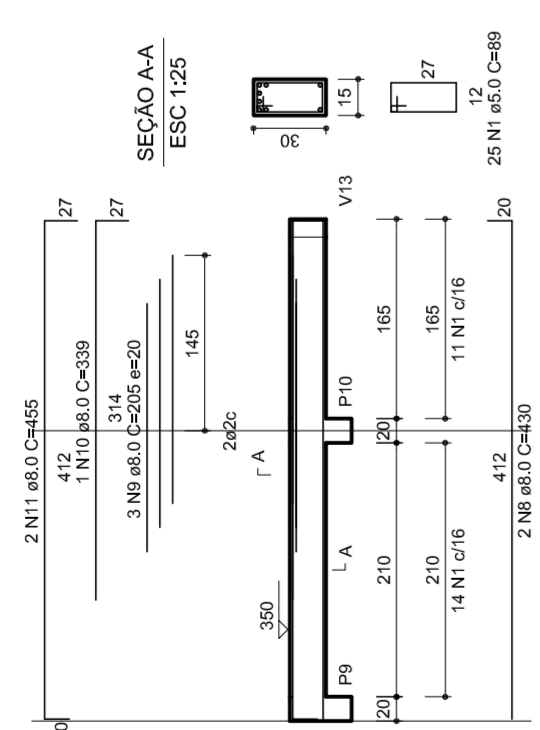


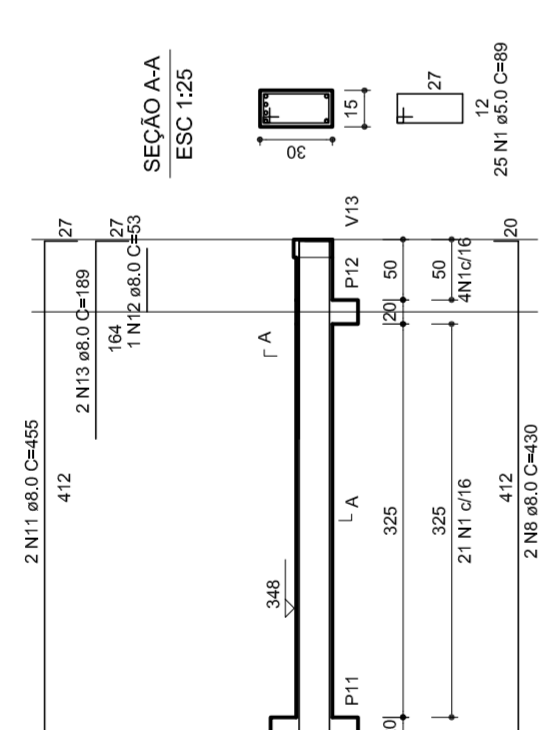
V1
1:50



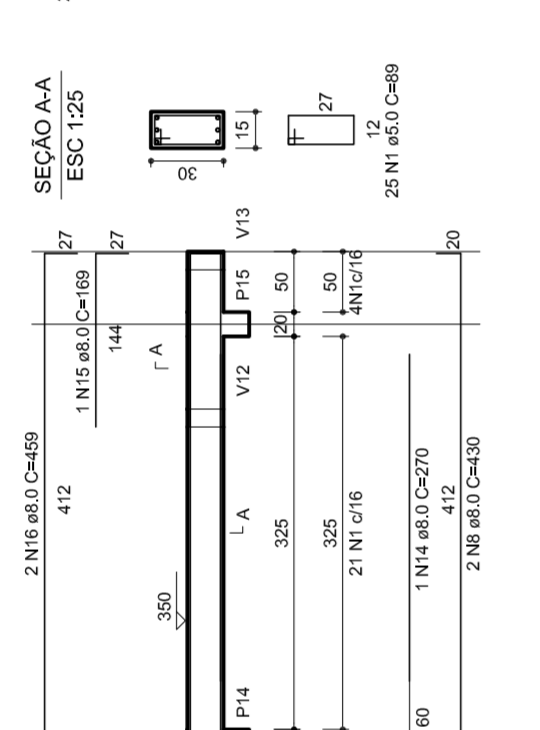
V2
1:50



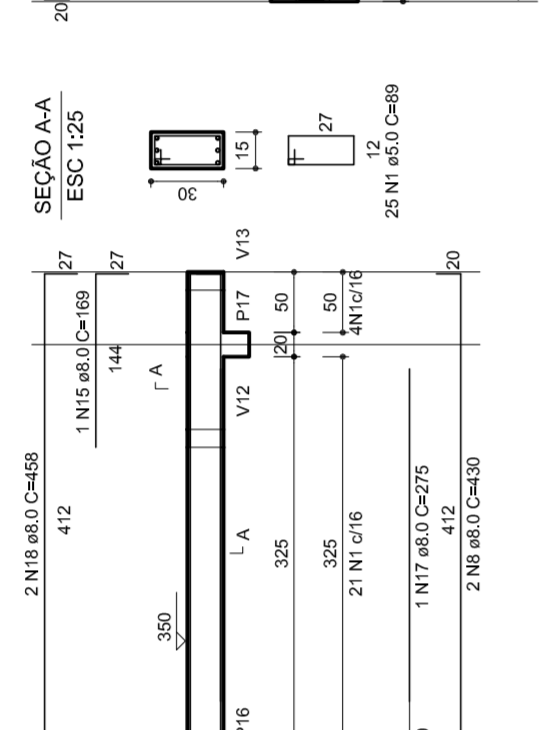
V3
1:50



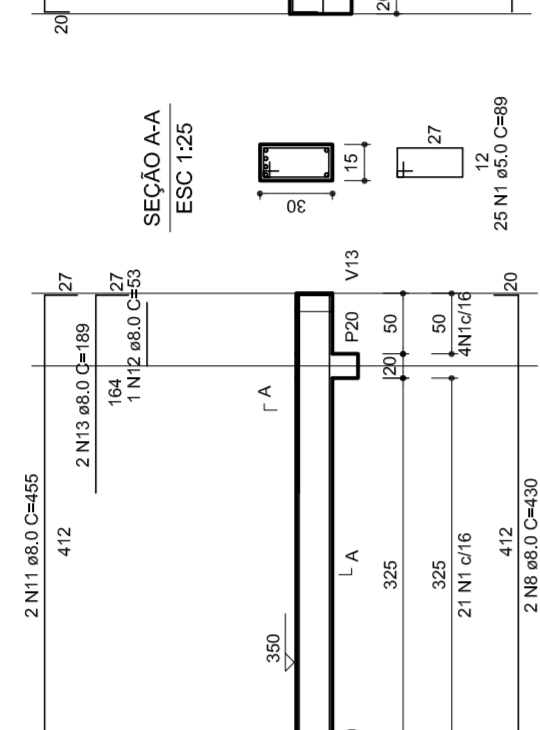
V4
1:50



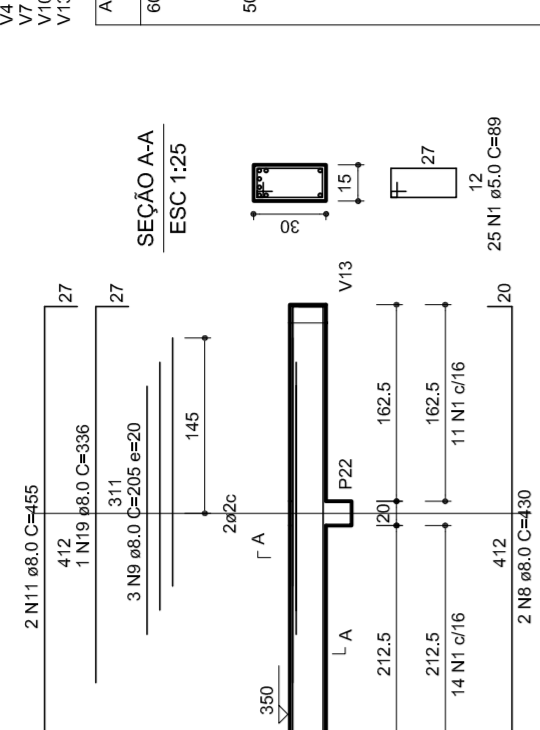
V5
1:50



V6
1:50



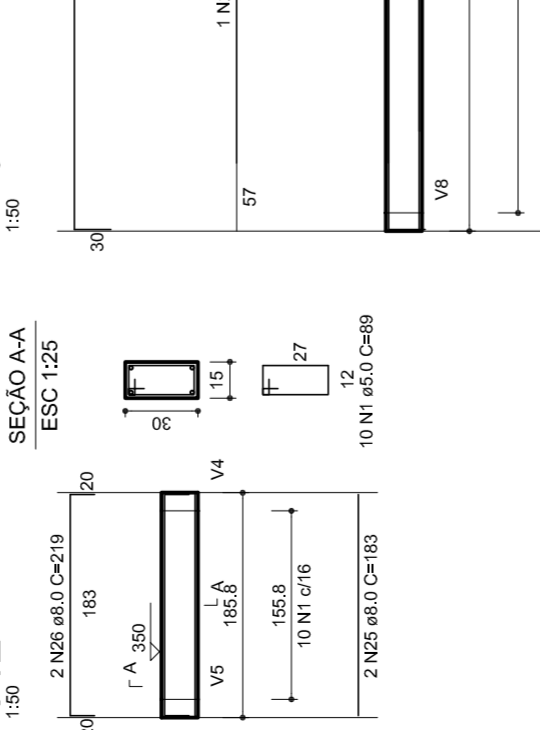
V7
1:50



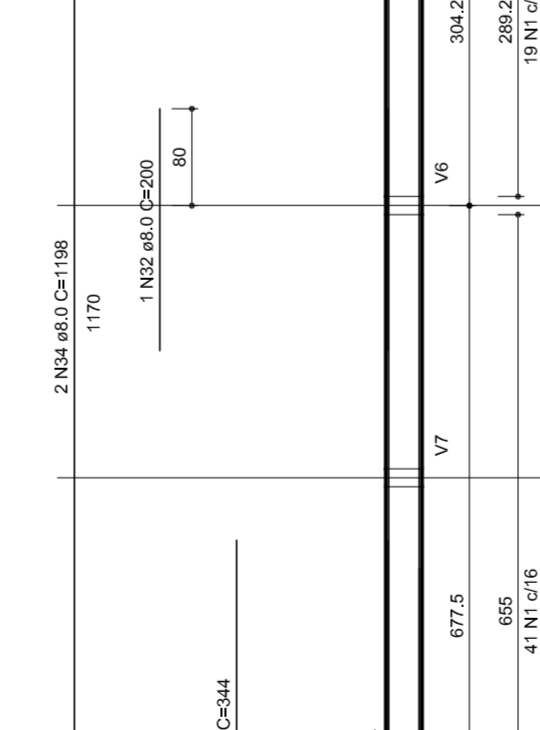
RELACIONAMENTO DO AÇO

VI	DIAM	O	UNIT	C.TOTAL
V1	8,0	398	12276	4824
V2	8,0	124	398	4936
V3	8,0	94	272	2568
V4	8,0	94	272	2568
V5	8,0	94	272	2568
V6	8,0	94	272	2568
V7	8,0	94	272	2568
V8	8,0	94	272	2568
V9	8,0	94	272	2568
V10	8,0	94	272	2568
V11	8,0	94	272	2568
V12	8,0	94	272	2568
V13	8,0	94	272	2568
V14	8,0	94	272	2568
V15	8,0	94	272	2568
V16	8,0	94	272	2568
V17	8,0	94	272	2568
V18	8,0	94	272	2568
V19	8,0	94	272	2568
V20	8,0	94	272	2568
V21	8,0	94	272	2568
V22	8,0	94	272	2568
V23	8,0	94	272	2568
V24	8,0	94	272	2568
V25	8,0	94	272	2568
V26	8,0	94	272	2568
V27	8,0	94	272	2568
V28	8,0	94	272	2568
V29	8,0	94	272	2568
V30	8,0	94	272	2568
V31	8,0	94	272	2568
V32	8,0	94	272	2568
V33	8,0	94	272	2568
V34	8,0	94	272	2568
V35	8,0	94	272	2568
V36	8,0	94	272	2568
V37	8,0	94	272	2568
V38	8,0	94	272	2568
V39	8,0	94	272	2568
V40	8,0	94	272	2568
V41	8,0	94	272	2568
V42	8,0	94	272	2568
V43	8,0	94	272	2568
V44	8,0	94	272	2568
V45	8,0	94	272	2568
V46	8,0	94	272	2568
V47	8,0	94	272	2568
V48	8,0	94	272	2568
V49	8,0	94	272	2568
V50	8,0	94	272	2568

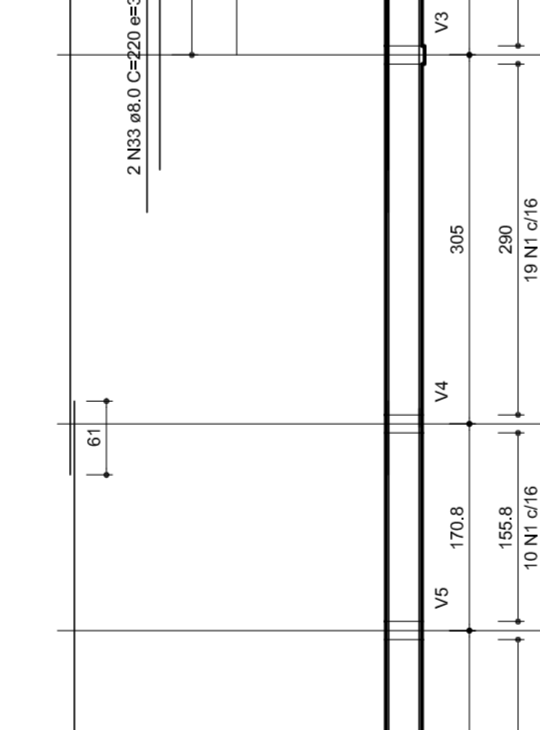
V12
1:50



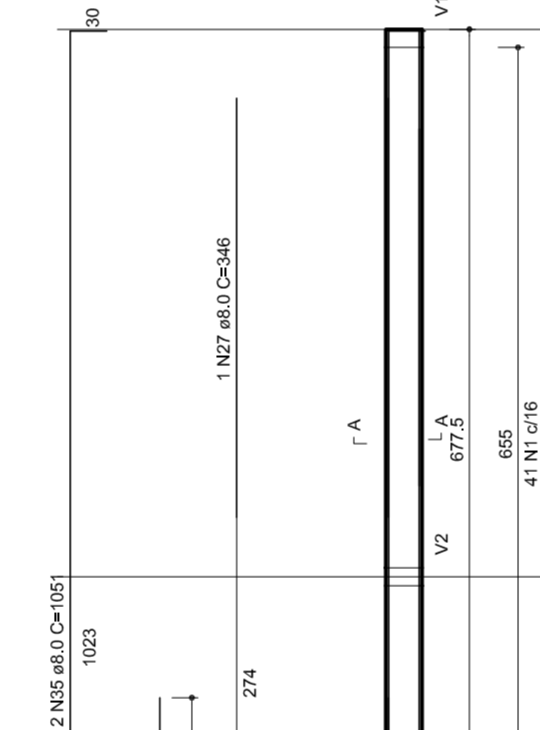
V13
1:50



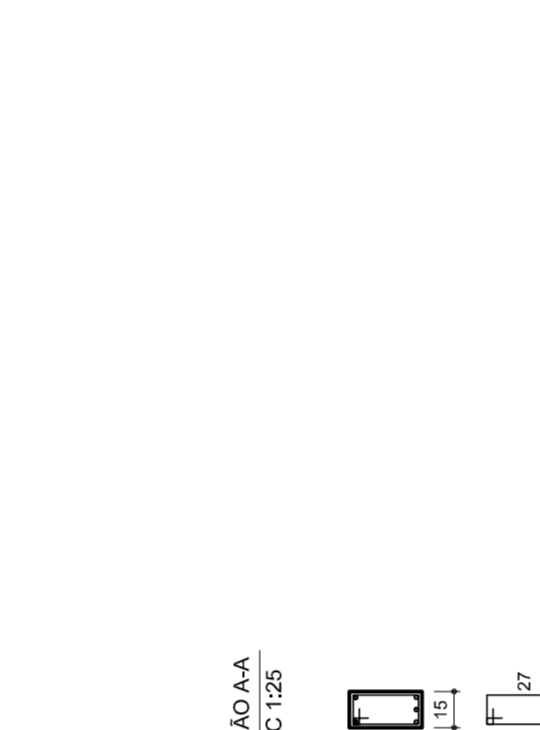
V14
1:50



V9
1:50



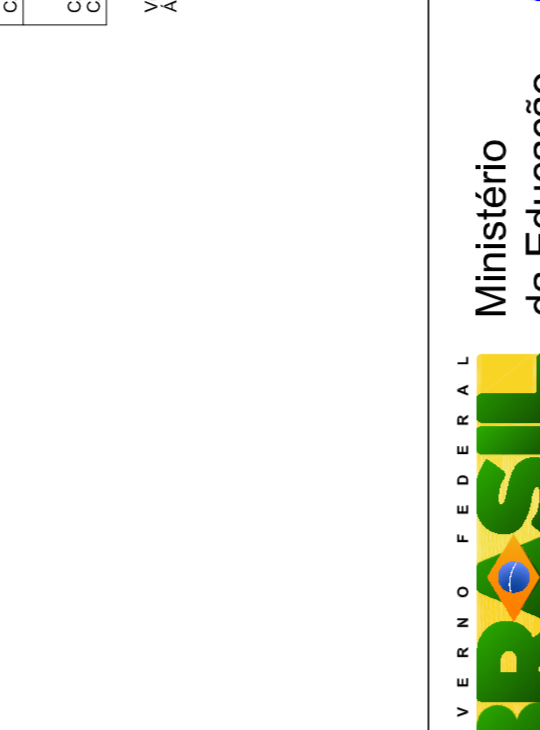
V10
1:50



V11
1:50



V15
1:50



RESUMO DO AÇO

CAPO	DIAM	C.TOTAL	PESO/10M
CAPO	8,0	385,3	4,977,5
CAPO	8,0	814,7	10,61
PESO TOTAL			
CAPO	275,7		
CAPO	104,1		

Vol. de concreto total = 59 m³
Área de forma total = 87,45 m²



PROJETO PADRÃO - FNDE

MUNICÍPIO - UF:
PROPRIETÁRIO:
ENDEREÇO:

PROPRIETÁRIO:
RESP. TÉCNICO:
CREA:

PROPRIETÁRIO:
RESP. TÉCNICO:
CREA:

DLFO:
CREA:
RA:

OBSERVAÇÕES:

QUADRA COBERTA PROJETO ESTRUTURAL

COORDENAÇÃO
CGEST - Coordenação
Geral de Infraestrutura
Educativa

ESTRUTURA DE CONCRETO
VIGAS - NÍVEL 320

REVISÃO
R.00
R.00
R.00

FORMATO
A1 (841 X 594)

ESCALA
1/125
DATA EMISSÃO
JULHO/2011

FRANQUISA
11/11

EST