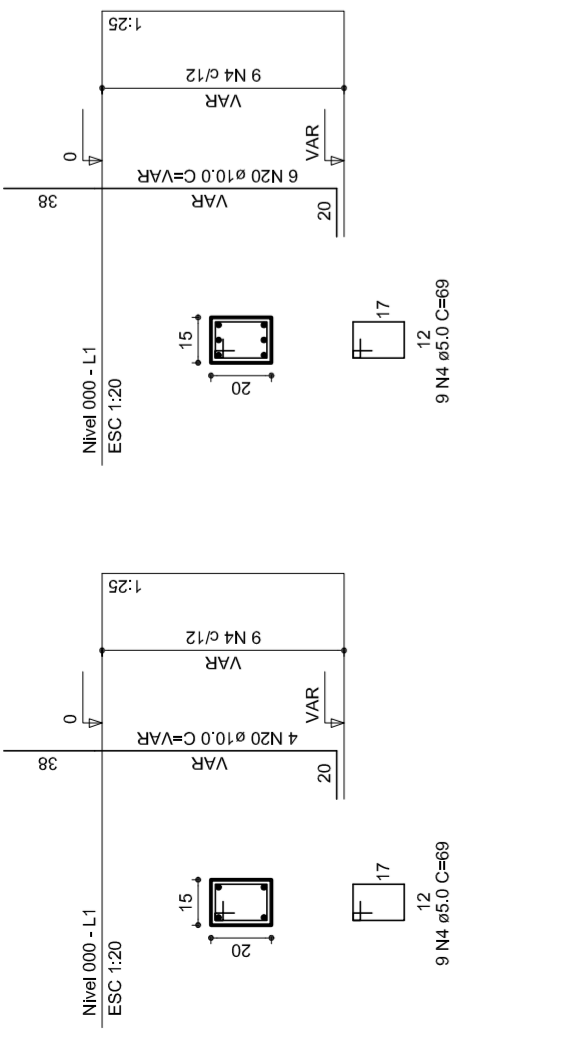
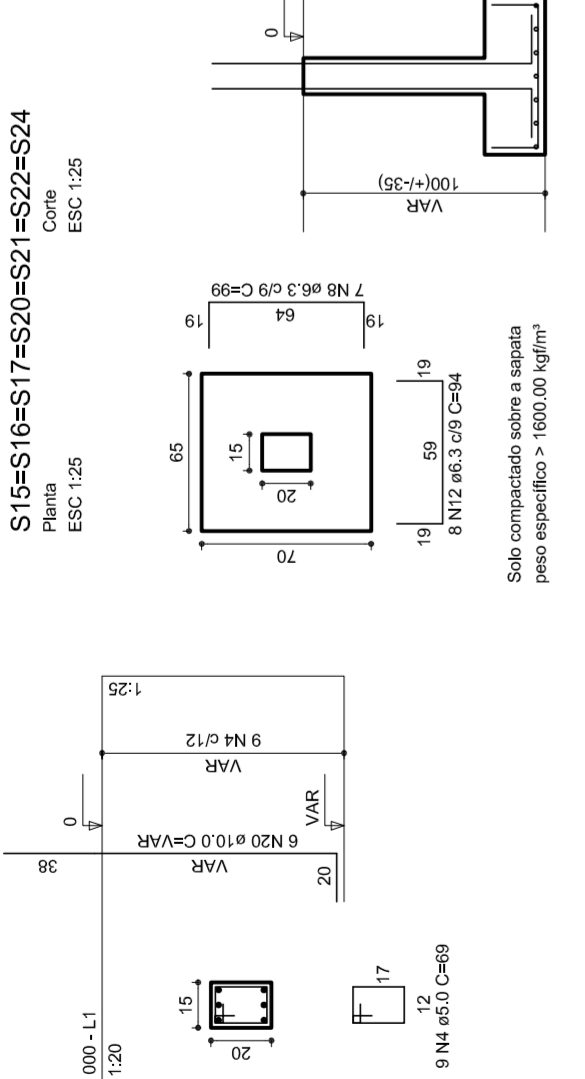


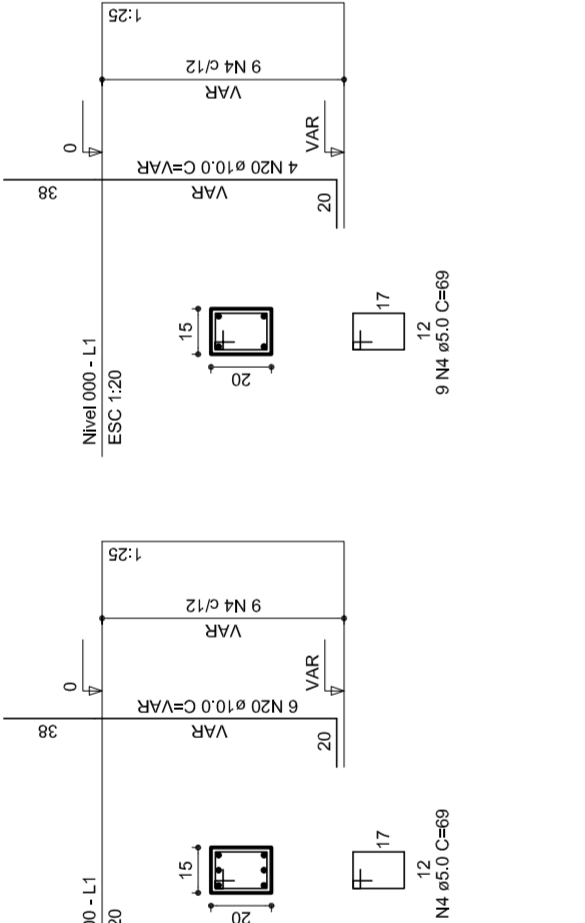
P15=P16=P17=P20=P21=P24



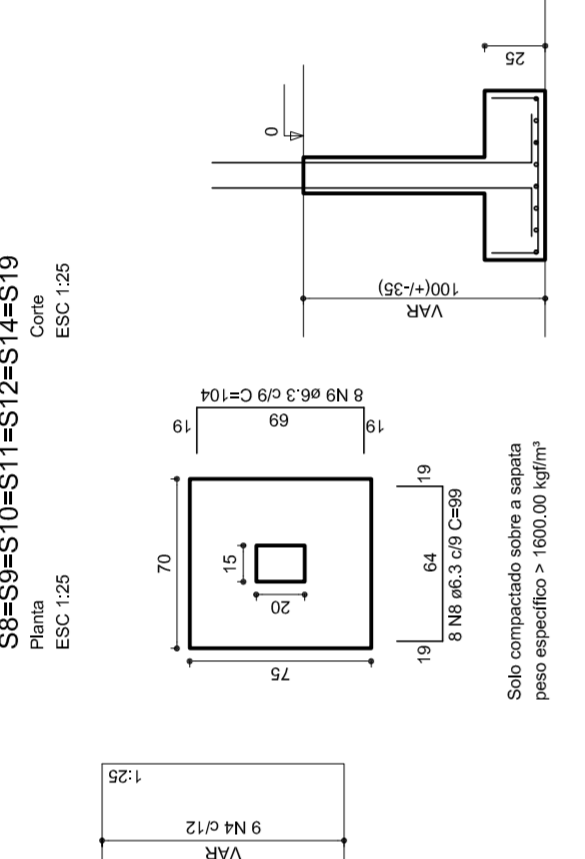
P22



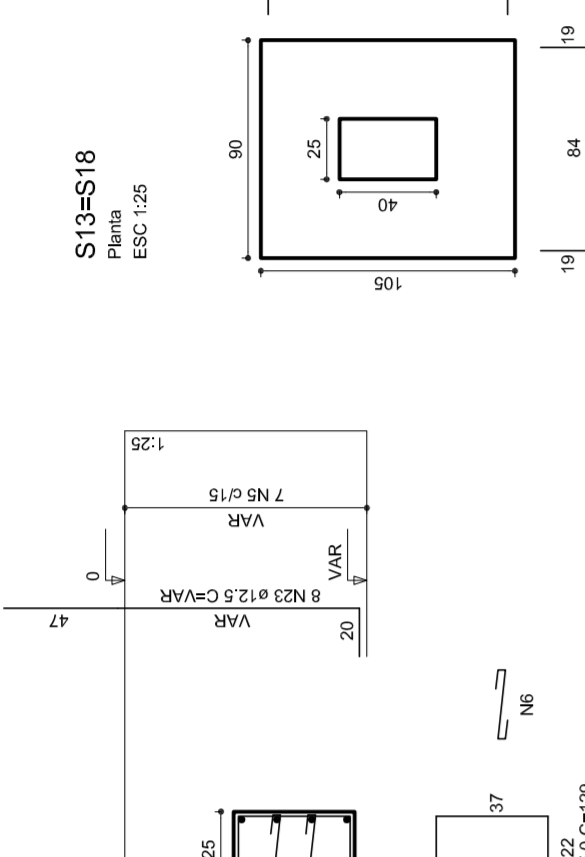
P10



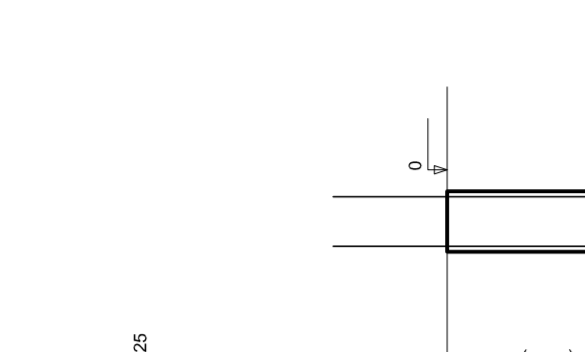
P8=P9=P11=P12=P14=P19



P13=P18



S13=S18

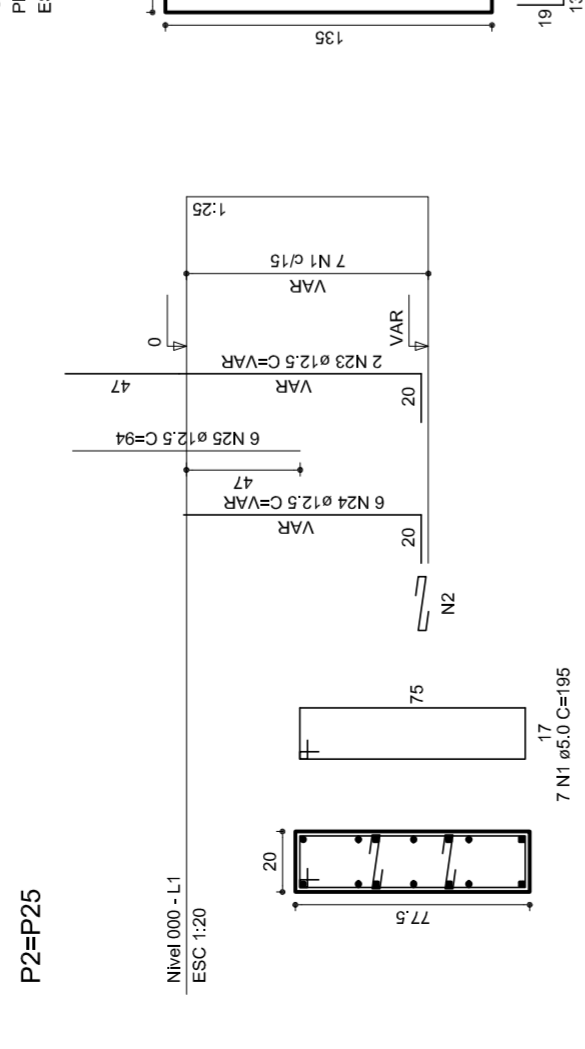


RELAÇÃO DO AÇO

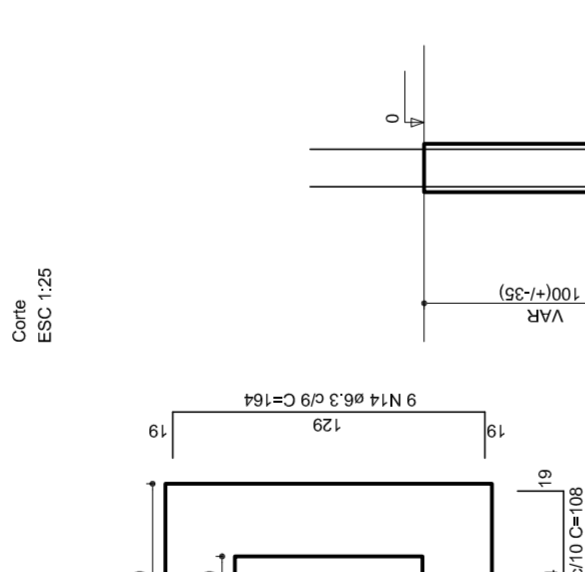
PI	DIAM	Q	LNMT	C.TOTAL
			(cm)	(kg/m)
20P2	20	0,0	198	6276
24P13	24	0,0	70	8934
25C13	25	0,0	70	8934
25C25	25	0,0	70	8934
84P3	8	0,0	25	2457
P22	8	0,0	25	2457
P24	8	0,0	25	2457
P25	8	0,0	25	2457
P26	8	0,0	25	2457
P27	8	0,0	25	2457
P28	8	0,0	25	2457
P29	8	0,0	25	2457
P30	8	0,0	25	2457
P31	8	0,0	25	2457
P32	8	0,0	25	2457
P33	8	0,0	25	2457
P34	8	0,0	25	2457
P35	8	0,0	25	2457
P36	8	0,0	25	2457
P37	8	0,0	25	2457
P38	8	0,0	25	2457
P39	8	0,0	25	2457
P40	8	0,0	25	2457
P41	8	0,0	25	2457
P42	8	0,0	25	2457
P43	8	0,0	25	2457
P44	8	0,0	25	2457
P45	8	0,0	25	2457
P46	8	0,0	25	2457
P47	8	0,0	25	2457
P48	8	0,0	25	2457
P49	8	0,0	25	2457
P50	8	0,0	25	2457
P51	8	0,0	25	2457
P52	8	0,0	25	2457
P53	8	0,0	25	2457
P54	8	0,0	25	2457
P55	8	0,0	25	2457
P56	8	0,0	25	2457
P57	8	0,0	25	2457
P58	8	0,0	25	2457
P59	8	0,0	25	2457
P60	8	0,0	25	2457
P61	8	0,0	25	2457
P62	8	0,0	25	2457
P63	8	0,0	25	2457
P64	8	0,0	25	2457
P65	8	0,0	25	2457
P66	8	0,0	25	2457
P67	8	0,0	25	2457
P68	8	0,0	25	2457
P69	8	0,0	25	2457
P70	8	0,0	25	2457
P71	8	0,0	25	2457
P72	8	0,0	25	2457
P73	8	0,0	25	2457
P74	8	0,0	25	2457
P75	8	0,0	25	2457
P76	8	0,0	25	2457
P77	8	0,0	25	2457
P78	8	0,0	25	2457
P79	8	0,0	25	2457
P80	8	0,0	25	2457
P81	8	0,0	25	2457
P82	8	0,0	25	2457
P83	8	0,0	25	2457
P84	8	0,0	25	2457
P85	8	0,0	25	2457
P86	8	0,0	25	2457
P87	8	0,0	25	2457
P88	8	0,0	25	2457
P89	8	0,0	25	2457
P90	8	0,0	25	2457
P91	8	0,0	25	2457
P92	8	0,0	25	2457
P93	8	0,0	25	2457
P94	8	0,0	25	2457
P95	8	0,0	25	2457
P96	8	0,0	25	2457
P97	8	0,0	25	2457
P98	8	0,0	25	2457
P99	8	0,0	25	2457
P100	8	0,0	25	2457
P101	8	0,0	25	2457
P102	8	0,0	25	2457
P103	8	0,0	25	2457
P104	8	0,0	25	2457
P105	8	0,0	25	2457
P106	8	0,0	25	2457
P107	8	0,0	25	2457
P108	8	0,0	25	2457
P109	8	0,0	25	2457
P110	8	0,0	25	2457
P111	8	0,0	25	2457
P112	8	0,0	25	2457
P113	8	0,0	25	2457
P114	8	0,0	25	2457
P115	8	0,0	25	2457
P116	8	0,0	25	2457
P117	8	0,0	25	2457
P118	8	0,0	25	2457
P119	8	0,0	25	2457
P120	8	0,0	25	2457

Solo compactado sobre a sapata
peso específico > 1600,00 kg/m³

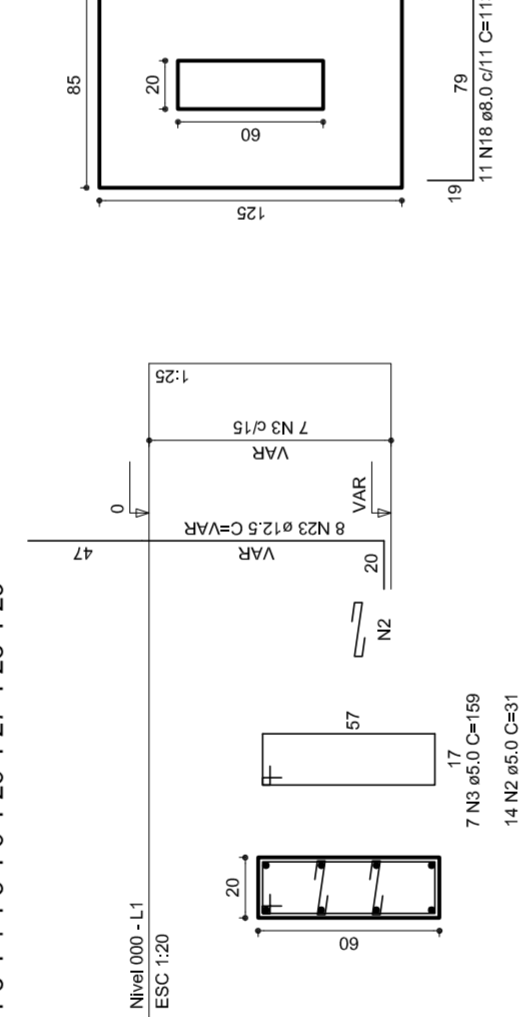
P2=P25



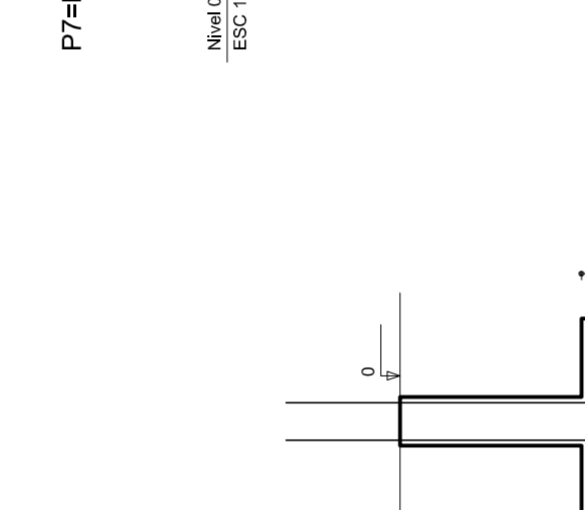
S2=S25



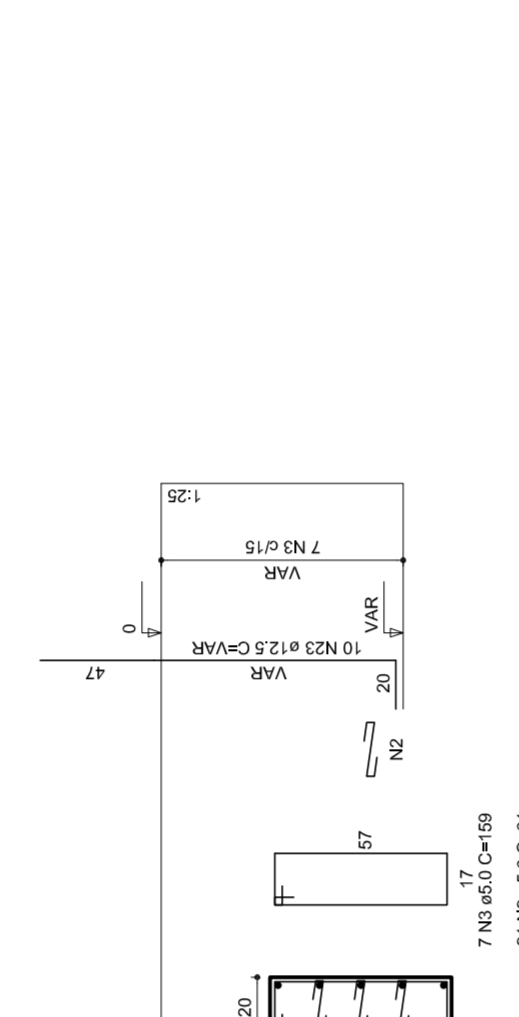
P3=P4=P5=P6=P26=P27=P28=P29



S3=S4=S5=S6=S26=S27=S28=S29



P7=P30

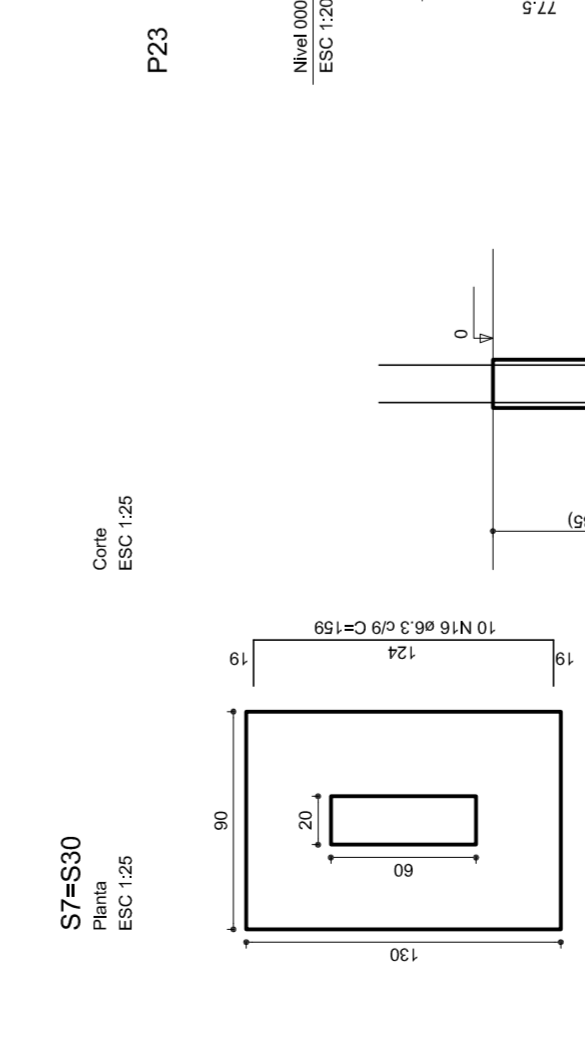


RESUMO DO AÇO

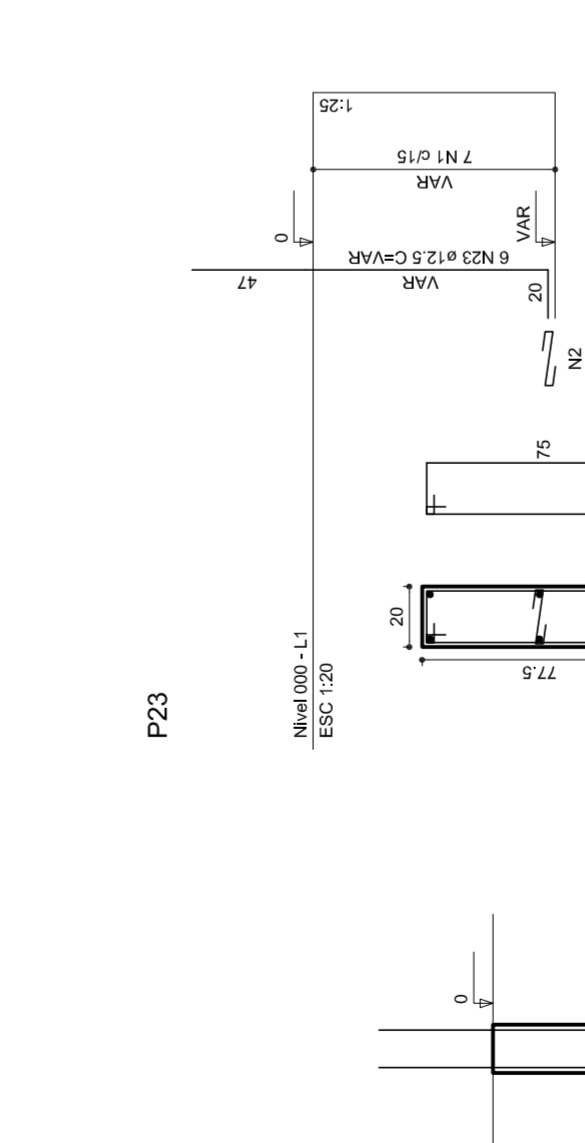
AÇO	DIAM	C TOTAL	PESQ. (%)
		(kg)	(kg)
CASO	6,3	481,3	12,5
	10,0	127,1	8,2
	12,5	117,6	8,2
	15,0	242,5	25,0
	20,0	222,2	25,0
CASO	5,8	58,1	
CASO	5,0	58,0	

Vol. de concreto total=48,71 m³
Área de forma batida=62,84 m²

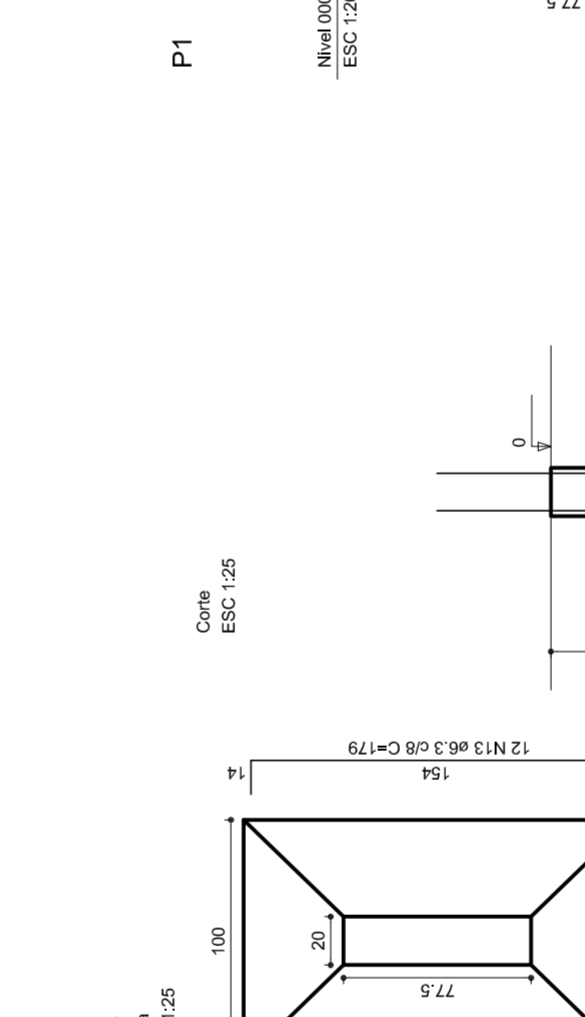
S7=S30



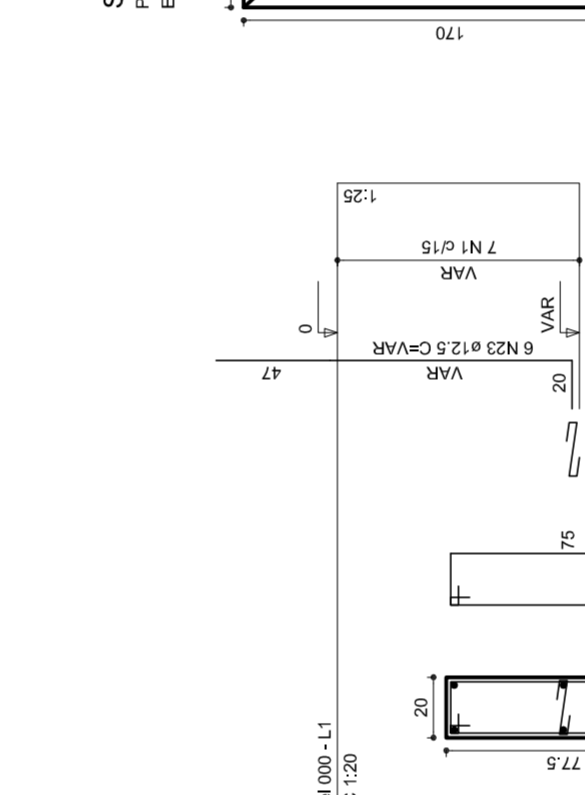
P23



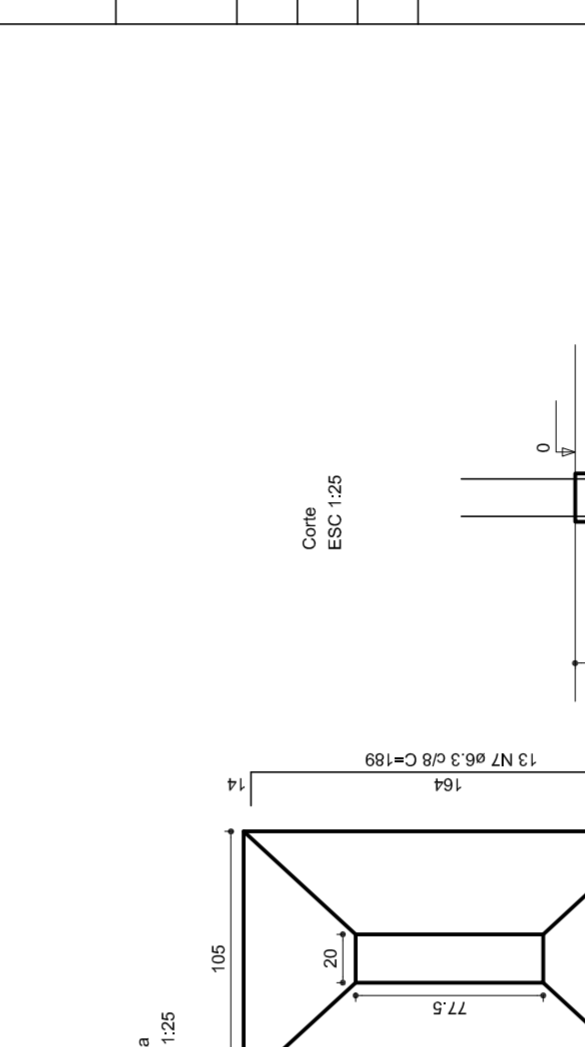
S23



P1



S1



PROJETO PADRÃO - FNDE

MUNICÍPIO – UF: _____

PROPRIETÁRIO: _____

ENDEREÇO: _____

PROPRIETÁRIO: _____

RESP. TÉCNICO _____

CREA _____

DUFO _____

CREA _____

RA _____

OBSERVAÇÕES: _____

QUADRA COBERTA
PROJETO ESTRUTURAL

CORRESPONDÊNCIA		ESTRUTURA DE CONCRETO		ESTRUTURA DE CONCRETO	
CGEST - Coordenação Geral de Infraestrutura Educacional		SAPATAS		SAPATAS	
REVISÃO R.00	ESCALA 1/125	REVISÃO R.00	DATA EMISSÃO	FRANQUISA	09/11
FORMATO AT (841 X 594)		REVISÃO R.00	JULHO/2011		